

# Tamarisk Mulching Demonstration

## Mack, CO

### July 26, 2010

Information compiled by the Colorado Department of Agriculture  
in cooperation by Stan Young, property owner, rancher and restoration practitioner.

2007 pre-beetle



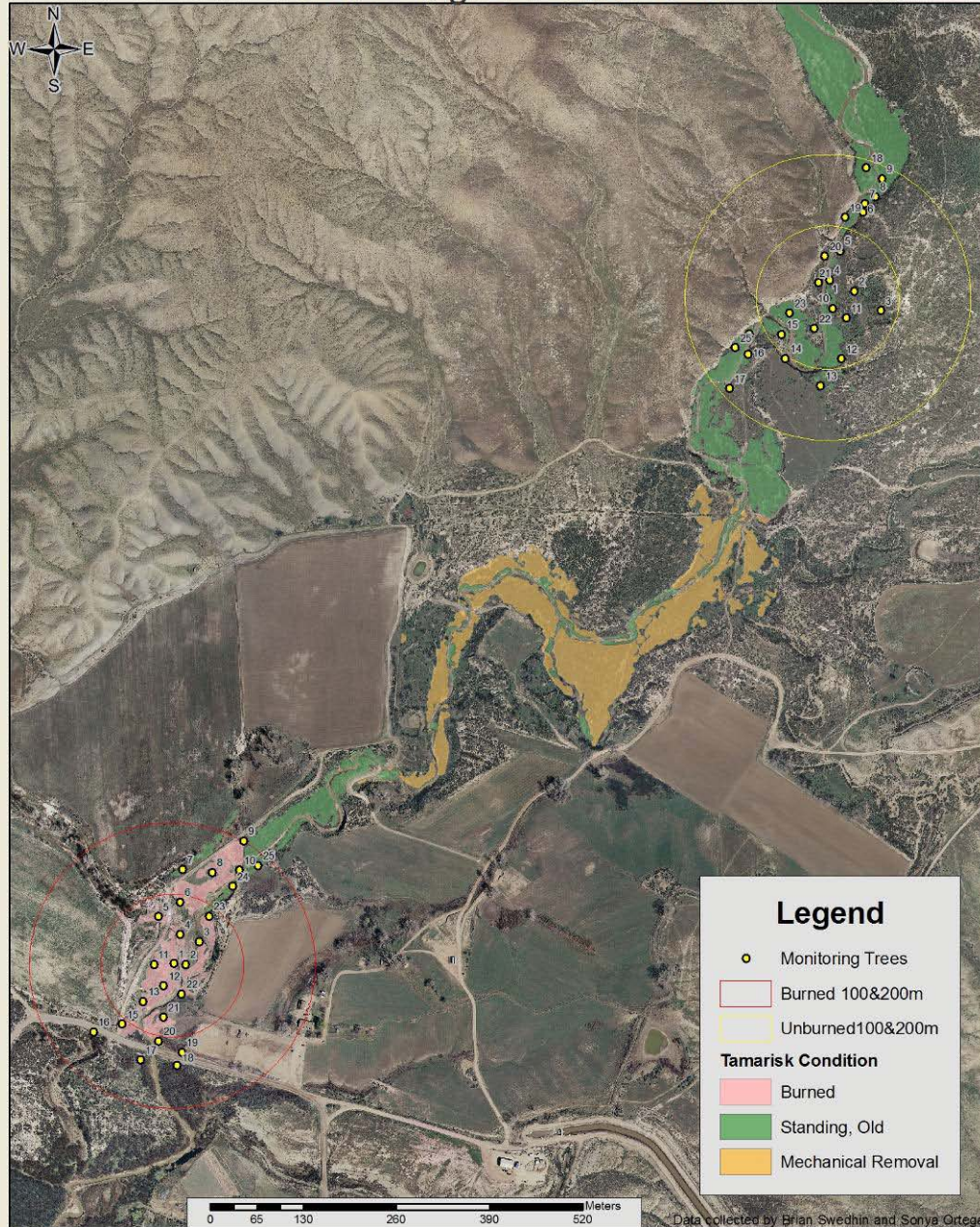
Stan Young owns a ranch along East Salt Creek in Mesa County. The Colorado Department of Agriculture, in cooperation with the NRCS, the Plant Materials Center in Meeker and the Tamarisk Coalition have worked with Stan to control tamarisk on his property and to ensure that the land comes back in vegetation desirable for wildlife habitat and grazing.

2010 post-beetle



Owl in cottonwood, on Stan's property

# Stan Young Property Monitoring Site Locations



Stan's property straddles East Salt Creek and the riparian corridor on either side of the creek was choked out with dense stands of tamarisk. The CDA's Palisade Insectary mapped the tamarisk, set out two monitoring sites (seen on the map showing marked tamarisk plants) and released *Diorhabda carinulata* in 2007-2008, at the center of both monitoring grids. Stan did two types of mechanical tamarisk removal in the central portion of his property and we utilized a natural burn to look at the impact of beetles on resprouting tamarisk.



Tamarisk was in extremely poor condition at the beginning of the 2010 field season. Tamarisk seen in this photo had been defoliated 2-3 times by beetles but also attacked by the tamarisk leaf hopper. The results have been excellent and the Insectary will continue to monitor the fate of the plants. Stan was already thinking about the next phase, which is low impact removal of tamarisk while saving any native plants that remain in the system, such as the cottonwood seen in this photo.



Stan has been looking into low impact mulchers to take down standing dead tamarisk, including tamarisk that has been defoliated by beetles. He bought a mulching head from Torrent Technical. It spins at over 3,000 rpm and the cutting blades are cup-like projections from the spinning cylinder. There are a few sharp 4-toothed projections interspersed with the cup-like blades, which Stan calls “more aggressive”.

Stan Young and his new mulching head

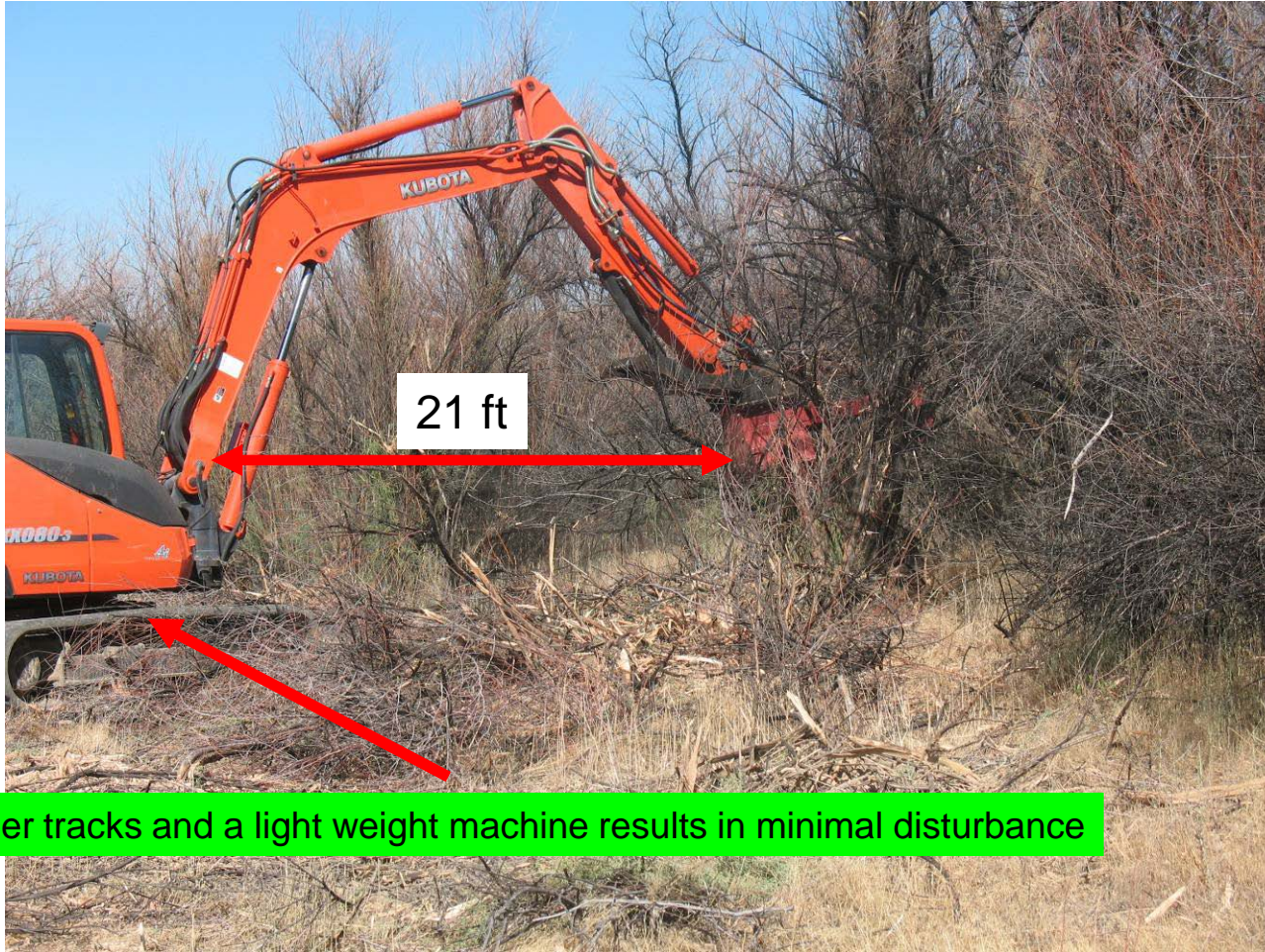


Close up of teeth on mulching head



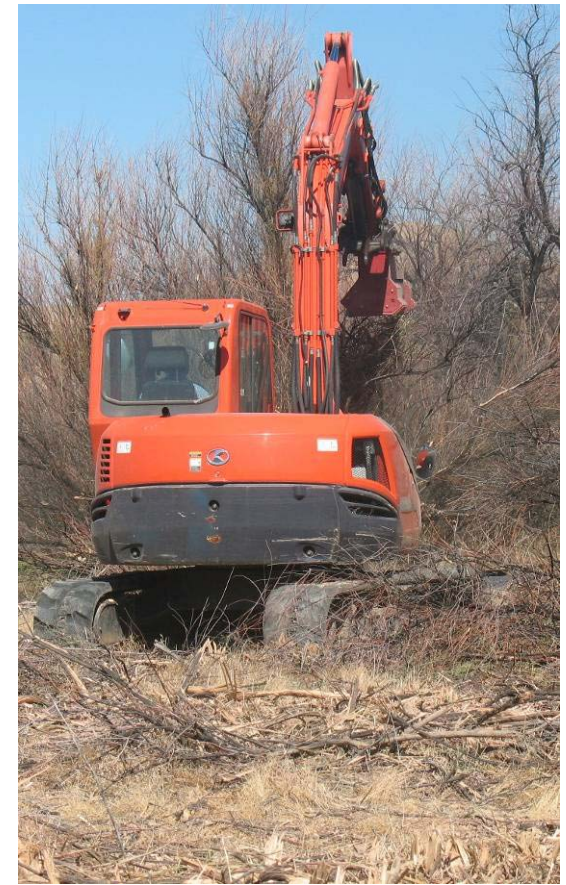
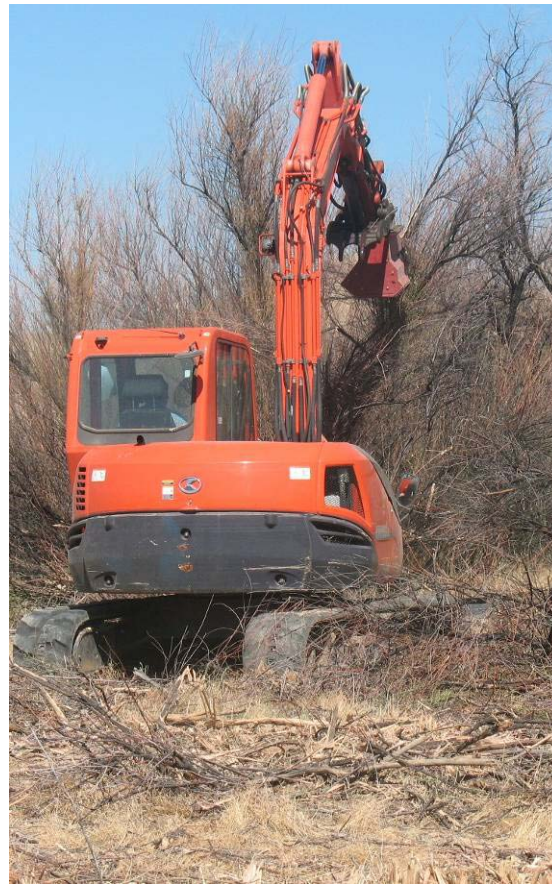
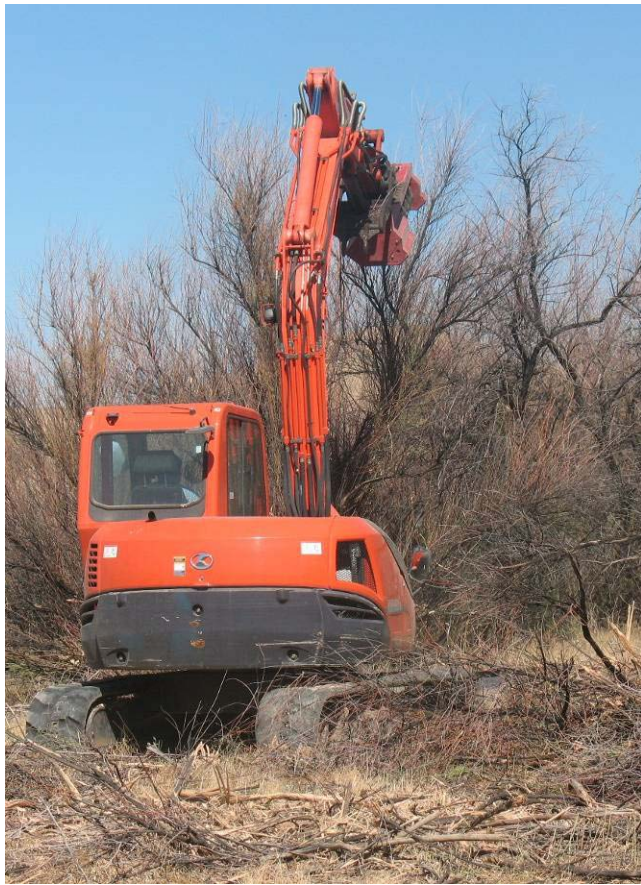
Company information

Stan put together the Torrent with a light weight Kubota compact excavator, on rubber tracks, in order to minimize soil impact and allow the maneuverability necessary to reach plants in difficult areas such as plants that are near to native trees and shrubs and plants along stream banks.



21 ft reach means a 42 ft reach from one side to the other plus the width of the machine gives a 50 ft path.

Soft rubber tracks and a light weight machine results in minimal disturbance



Trees were ground from the top down by lowering the mulching head onto them



By moving the mulching head from left to right it can be used like a cutting blade to chop off larger pieces of the dead branches





The mulching head is small (40 inches) and maneuverable making it a highly selective removal method



The excavator produces minimal disturbance, especially if it is run over the mulch as it moves forward.



Air conditioned cab is an essential component of the machine.

For more information on the mulcher or on prices please contact Stan Young at  
(970) 216-8112