

Status of Southwestern Willow Flycatcher in California

Barbara Kus
Scarlett Howell
Ryan Pottinger
Michelle Treadwell
Shannon Mendia

Western Ecological Research Center
San Diego Field Station

November 12, 2020



Source of Information

CA portion of Rangewide SWFL Database

Recovery Database (USGS)

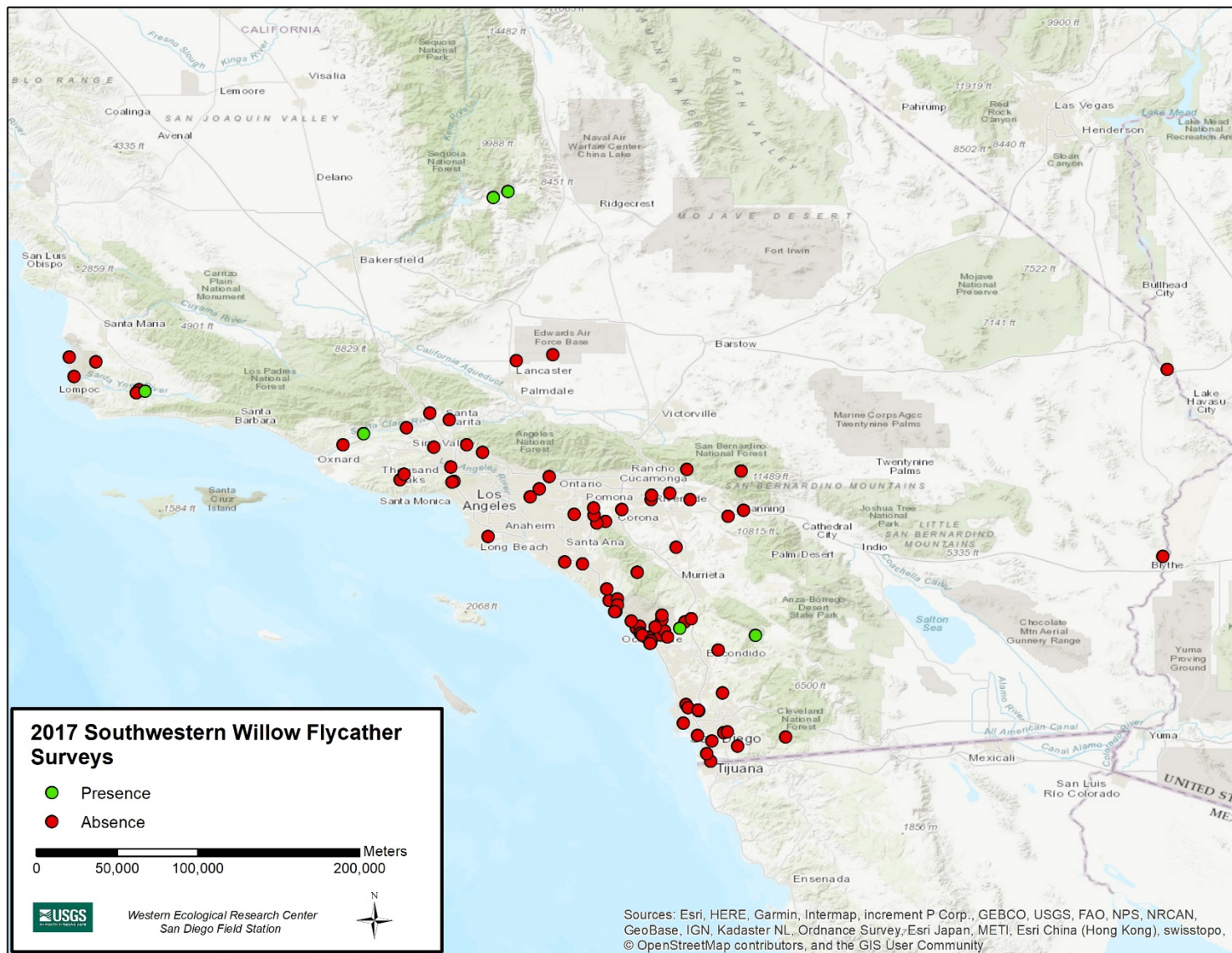
- CA Riparian Birds Working Group
- Meets every 2 years (last meeting Dec. 2019)

Survey Site Attributes Table (Example)

2011 Point Label	Site Name	Drainage	County	Source	Total SWFL	# Resident Males	# Resident Females
CAAG002	Amargosa Creek - Leona Valley	Amargosa Creek	Los Angeles	Robert Hamilton	0	0	0
CAAH001	Agua Hedionda - Macario Canyon	Agua Hedionda	San Diego	Markus Spiegelberg	0	0	0
CAAH010	Agua Hedionda - Calavera Creek	Agua Hedionda	San Diego	Brennan Mulrooney	0	0	0
CAAJ001	Aliso Canyon (Angeles NF)	Aliso Canyon (LosAngeles)	Los Angeles	Brian Daniels	0	0	0
CAAL001	Aliso Creek - Camp Pendleton	Aliso Creek	San Diego	Barbara Kus	0	0	0
CAAM002	Amargosa Canyon	Amargosa River	Inyo	Chris McCreedy	1	1	0
CAAM003	Amargosa River - Shoshone	Amargosa River	Inyo	Chris McCreedy	0	0	0
CAAU001	Tylerhorse Canyon	Antelope Valley	Kern	Gabriel Valdes	0	0	0
CAAU002	Gamble Spring Canyon	Antelope Valley	Kern	Gabriel Valdes	0	0	0
CAAU003	Burham Canyon	Antelope Valley	Kern	Gabriel Valdes	0	0	0
CAAU004	Blue Sky Wind Project	Antelope Valley	Los Angeles	Gabriel Valdes	0	0	0
CABT004	Big Tujunga Creek - Haines Canyon	Big Tujunga Creek	Los Angeles	Brian Daniels	0	0	0
CABV003	Buena Vista Creek - Quarry	Buena Vista Creek	San Diego	Erik LaCoste	0	0	0
CABY001	Puente Hills Brea Canyon	Brea Canyon	Orange	Robert Hamilton	0	0	0

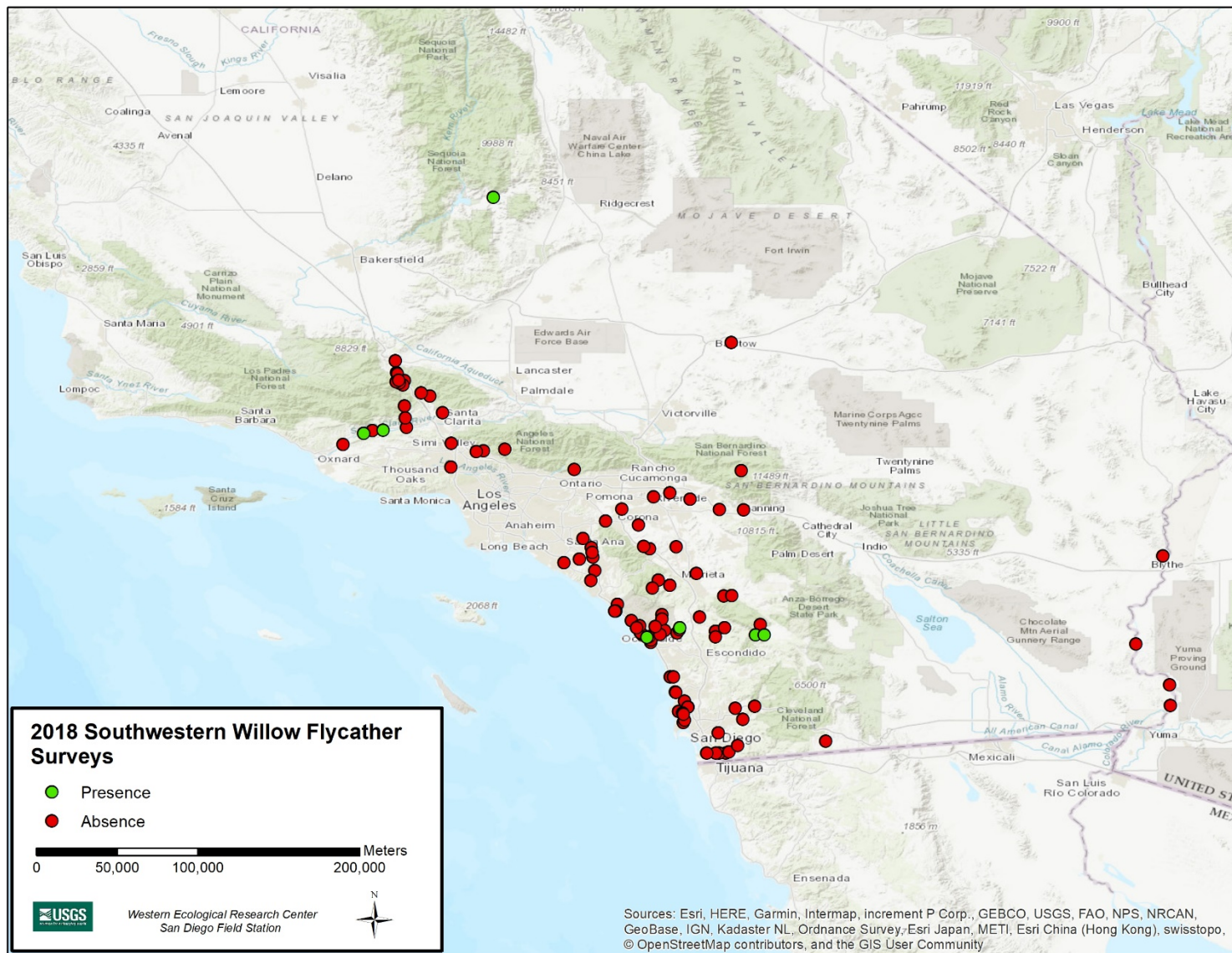


SWFL Surveys and Distribution 2017



Preliminary Information: Subject to Revision
Not for Citation

SWFL Surveys and Distribution 2018



Preliminary Information: Subject to Revision
Not for Citation

Recent SWFL Population Data

	2003	2004	2005	2006	2007	2008	2009	2010	2011	2012	2013	2014	2015	2016	2017	2018
# contributors	30	45	29	29	42	38	38	40	40	41	37	39	43	30	27	34
# sites surveyed	109	146	129	83	193	123	134	125	120	117	105	104	157	95	90	107
# sites SWFL present	16	10	8	9	16	7	10	9	9	11	7	12	12	7	6	7
% sites SWFL present	15	7	6	11	8	6	7	7	8	9	7	12	8	7	7	7
# resident males	104	93	37	38	54	27	52	46	26	29	43	57	78	36	22	36
# resident females	96	105	43	42	44	20	49	33	20	18	43	49	62	25	22	32
TOTAL	206	200	80	80	98	48	101	79	46	47	89	106	140	61	44	69



Preliminary Information: Subject to Revision
Not for Citation

Recent SWFL Population Data

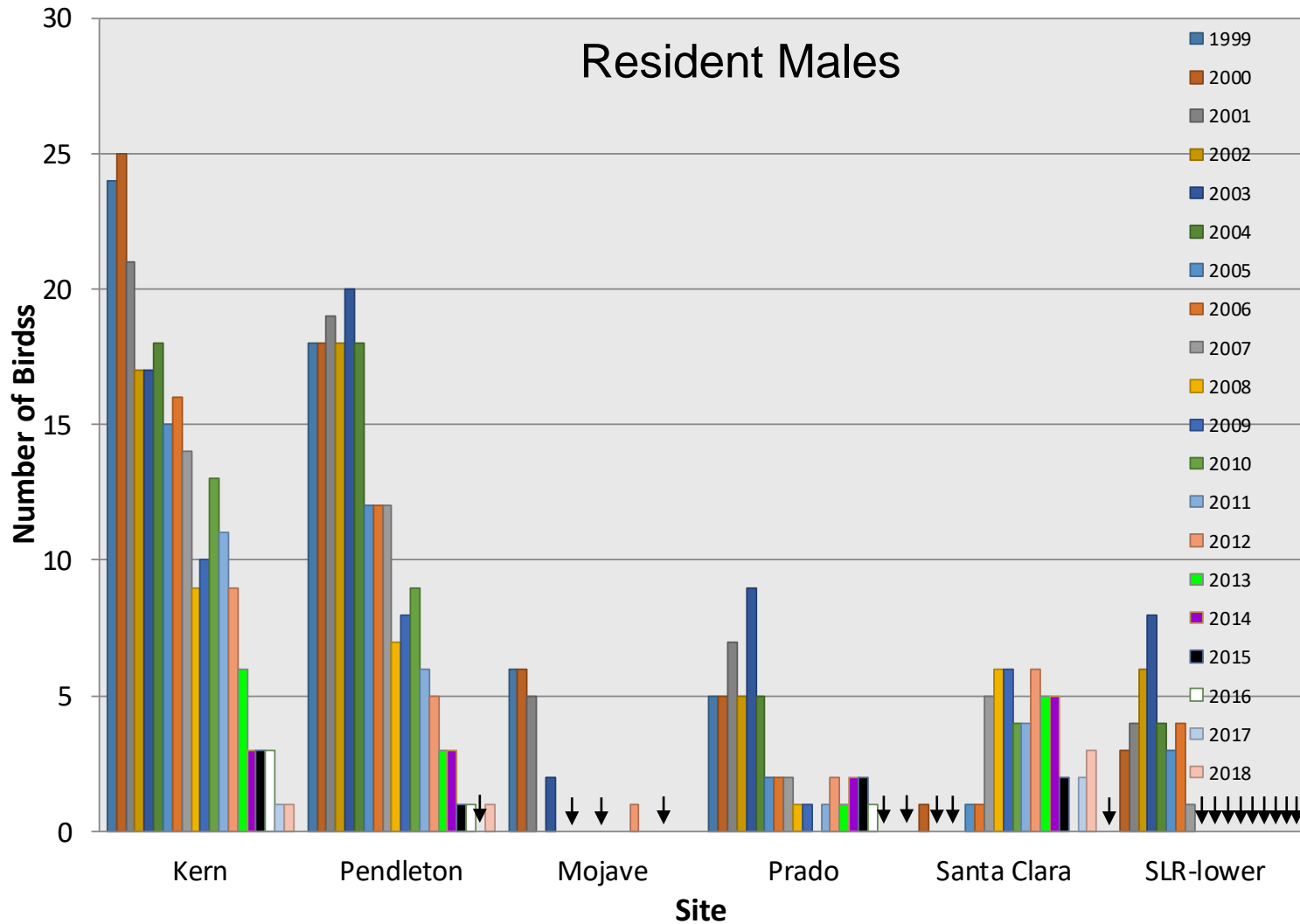
	2003	2004	2005	2006	2007	2008	2009	2010	2011	2012	2013	2014	2015	2016	2017	2018
# contributors	30	45	29	29	42	38	38	40	40	41	37	39	43	30	27	34
# sites surveyed	109	146	129	83	193	123	134	125	120	117	105	104	157	95	90	107
# sites SWFL present	16	10	8	9	16	7	10	9	9	11	7	12	12	7	6	7
% sites SWFL present	15	7	6	11	8	6	7	7	8	9	7	12	8	7	7	7
# resident males	104	93	37	38	54	27	52	46	26	29	43	57	78	36	22	36
# resident females	96	105	43	42	44	20	49	33	20	18	43	49	62	25	22	32
TOTAL	206	200	80	80	98	48	101	79	46	47	89	106	140	61	44	69

Challenges to interpretation of trends:

- not all sites surveyed in all years
- “sites” not always the same
- differences in intensity of effort (survey vs monitoring)

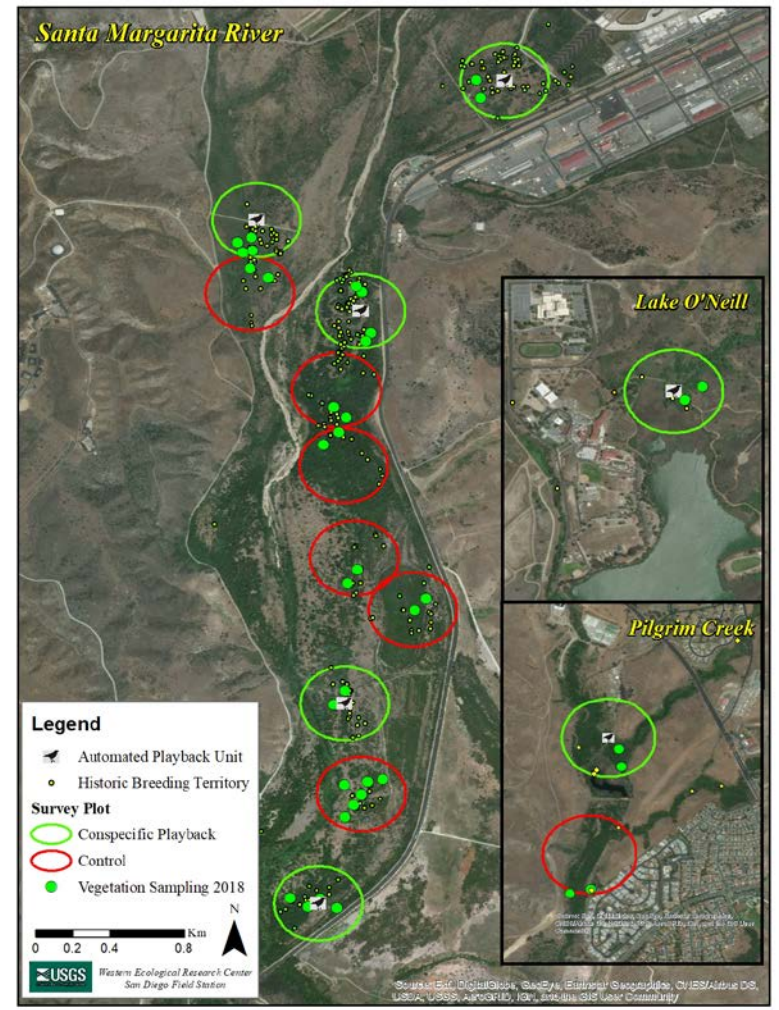
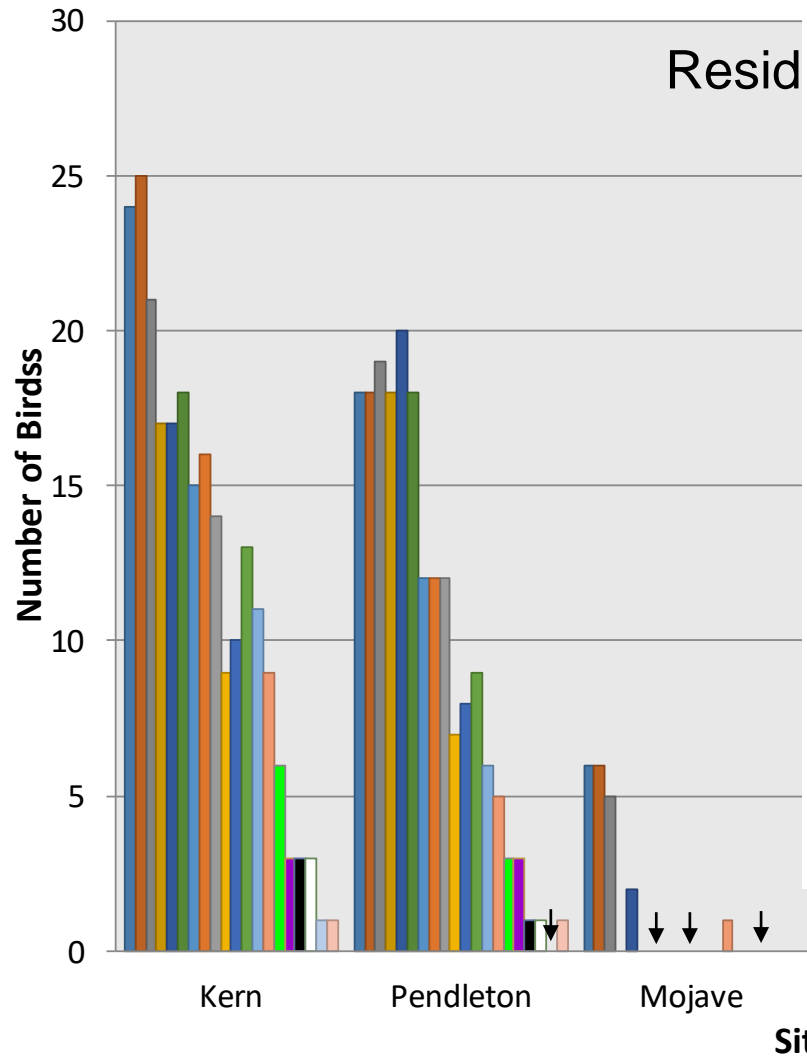


SWFL Population Size: 1999-2018



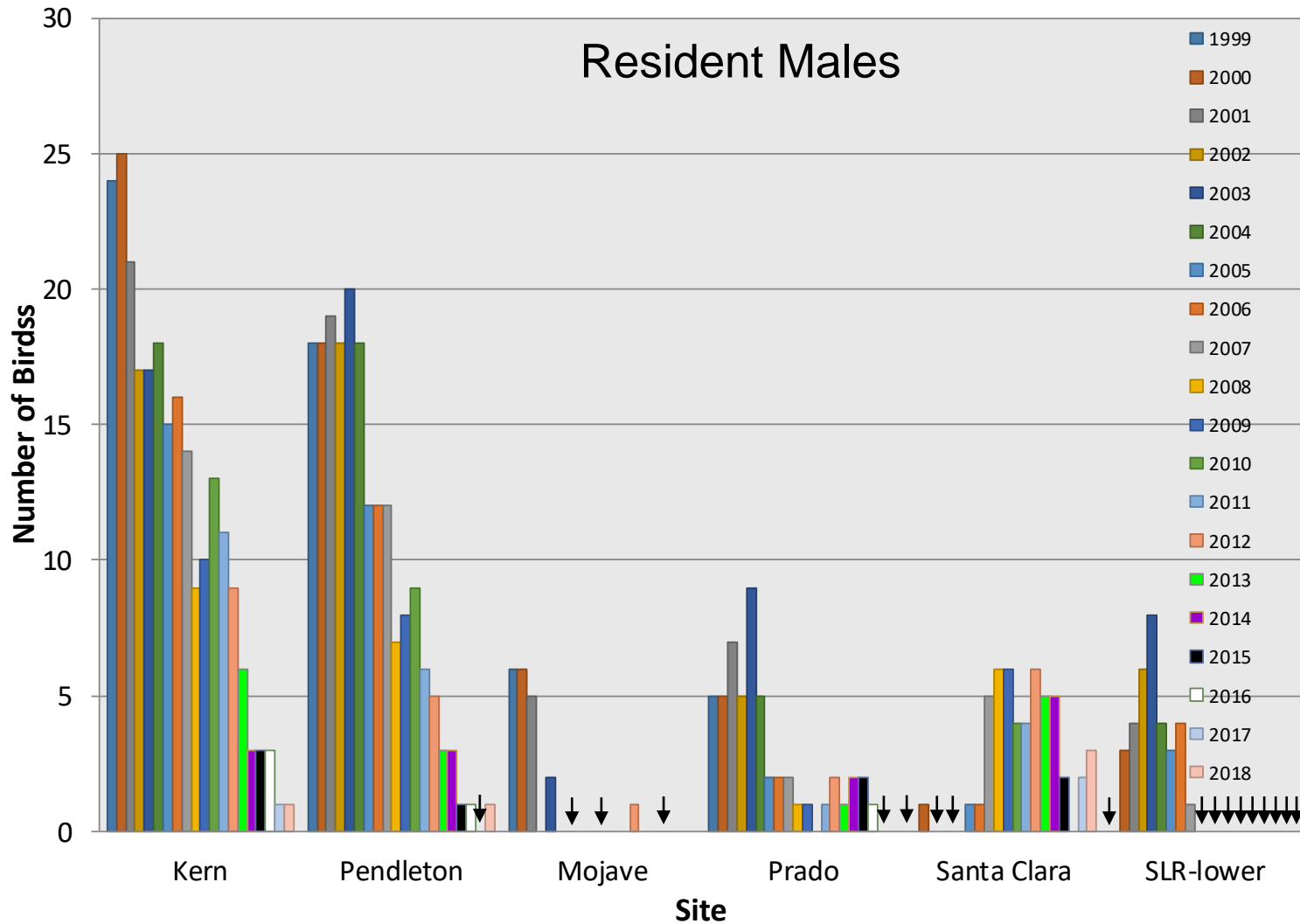
Preliminary Information: Subject to Revision
Not for Citation

SWFL Population



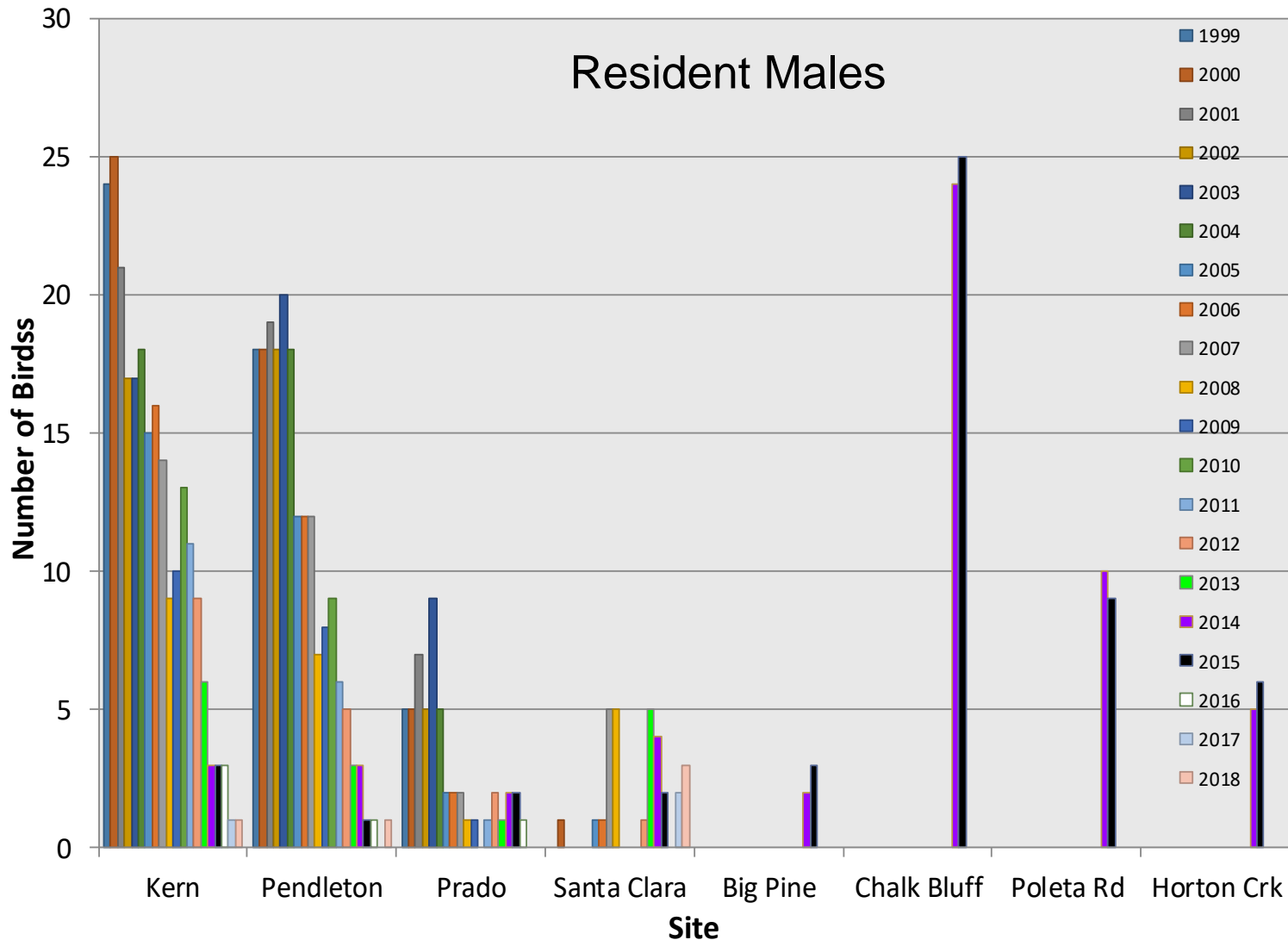
Preliminary Information: Subject to Revision
Not for Citation

SWFL Population Size: 1999-2018



Preliminary Information: Subject to Revision
Not for Citation

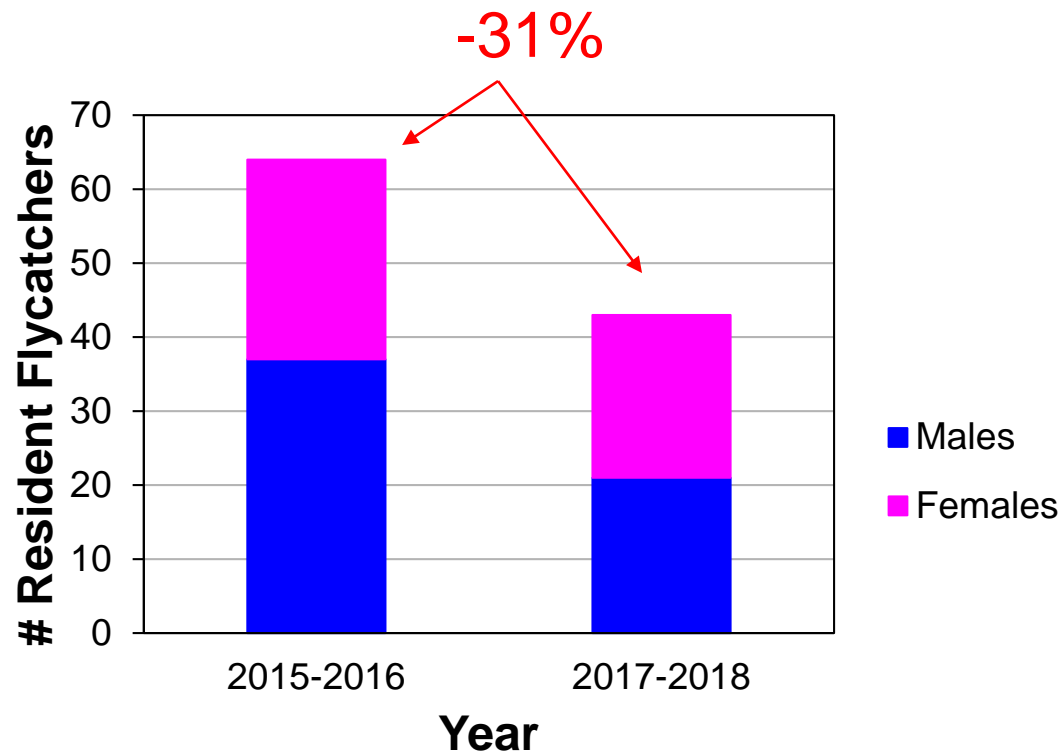
SWFL Population Size: 1999-2018



Preliminary Information: Subject to Revision
Not for Citation

SWFL Population Size: 2015-2018

Sites surveyed in 2015 or 2016 AND 2017 or 2018 (N = 81):

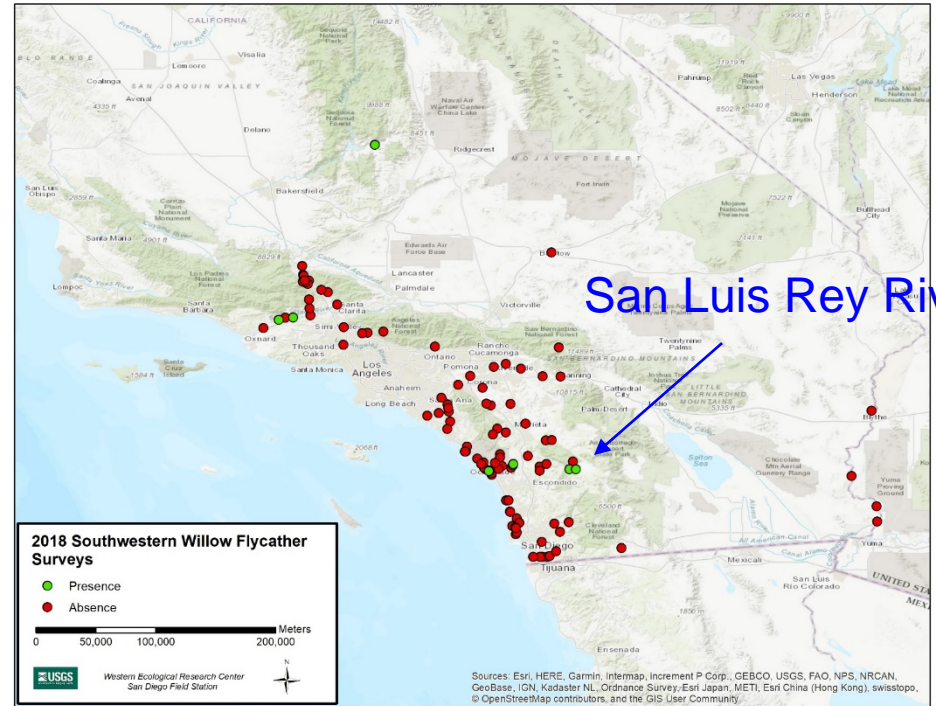
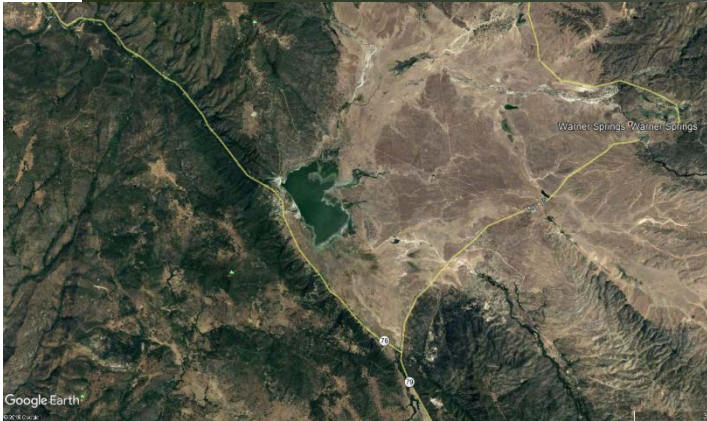
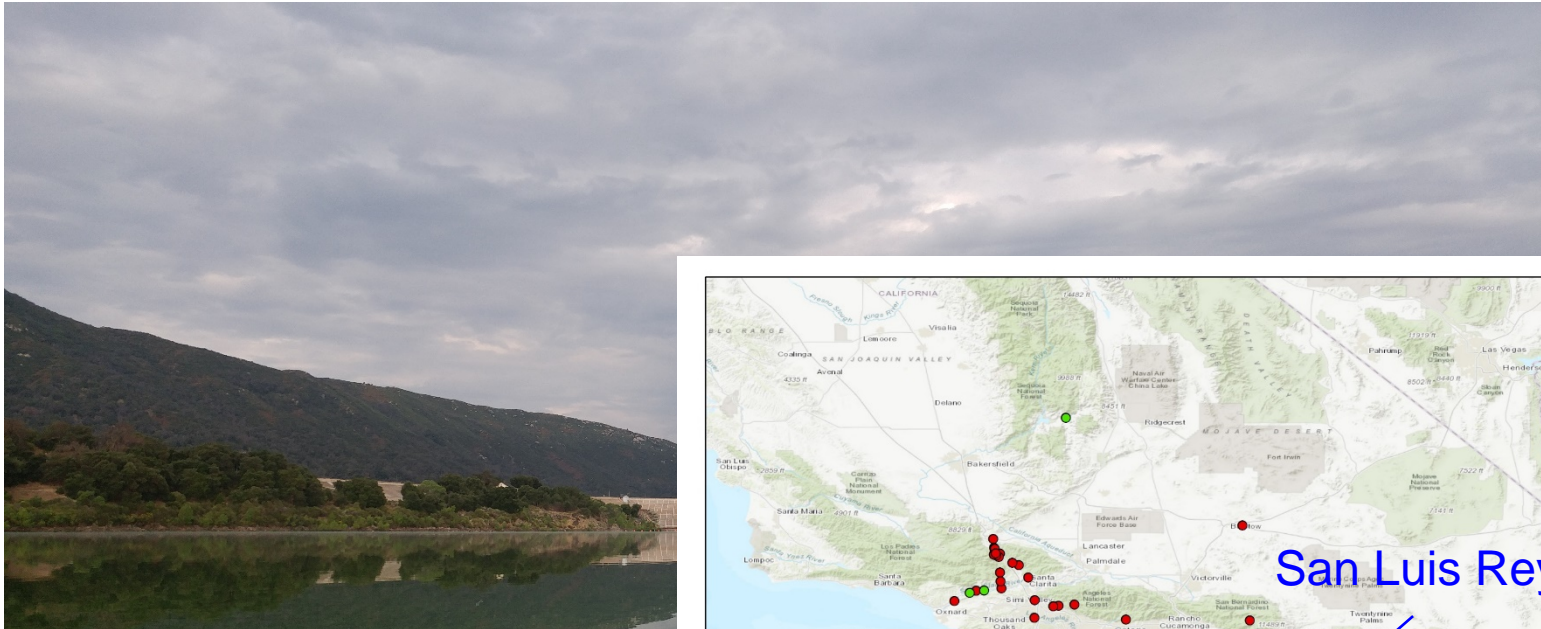


Lake Henshaw



Preliminary Information: Subject to Revision
Not for Citation

Lake Henshaw



Preliminary Information: Subject to Revision
Not for Citation



Barbara Kus



Barbara Kus



Barbara Kus



Barbara Kus



Preliminary Information: Subject to Revision
Not for Citation



Barbara Kus



Barbara Kus



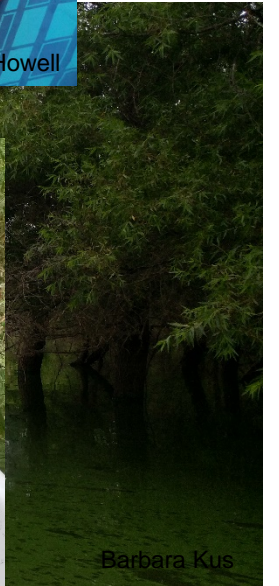
Scarlett Howell



Barbara Kus



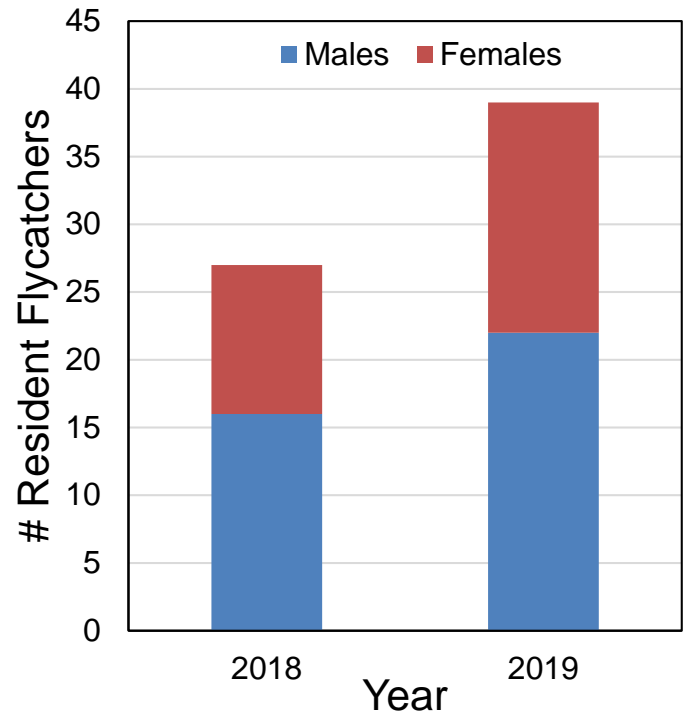
Scarlett Howell



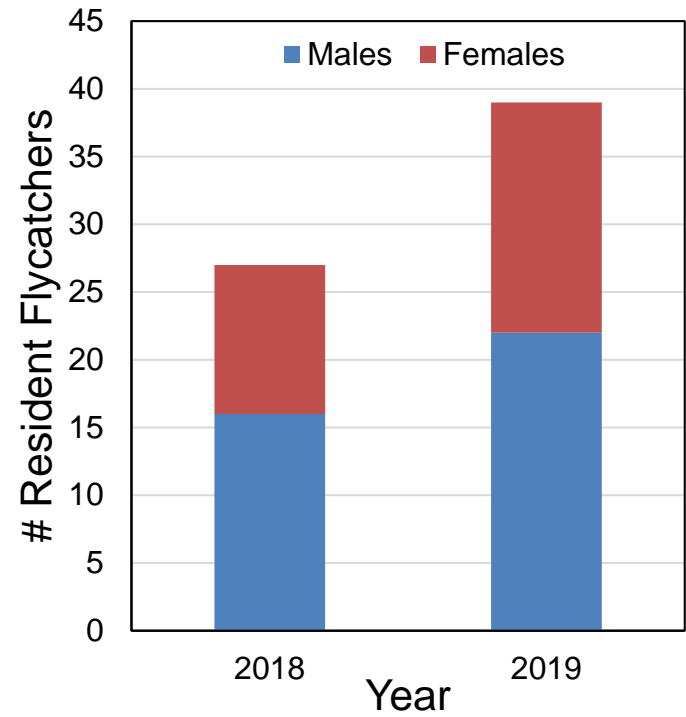
Barbara Kus



Preliminary Information: Subject to Revision
Not for Citation



Preliminary Information: Subject to Revision
Not for Citation



Preliminary Information: Subject to Revision
Not for Citation

Summary

- ❖ California SWFL population is small (<<100 territories)
- ❖ Many “large” historic populations have been virtually extirpated
- ❖ Recent declines probably a response to prolonged drought
- ❖ Populations limited to a few sites
- ❖ “Large” populations in Owen’s Valley probably not southwestern subspecies
- ❖ Largest population in California now concentrated at Lake Henshaw on the upper San Luis Rey River

