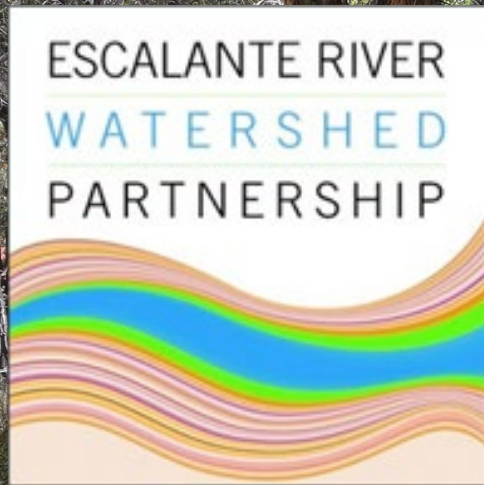
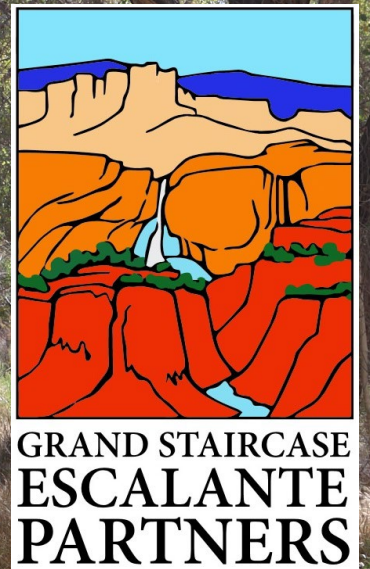


# Russian Olive on the Escalante River: Lessons From 15 Years of Restoration



Kevin Berend  
Grand Staircase Escalante Partners,  
Escalante River Watershed Partnership



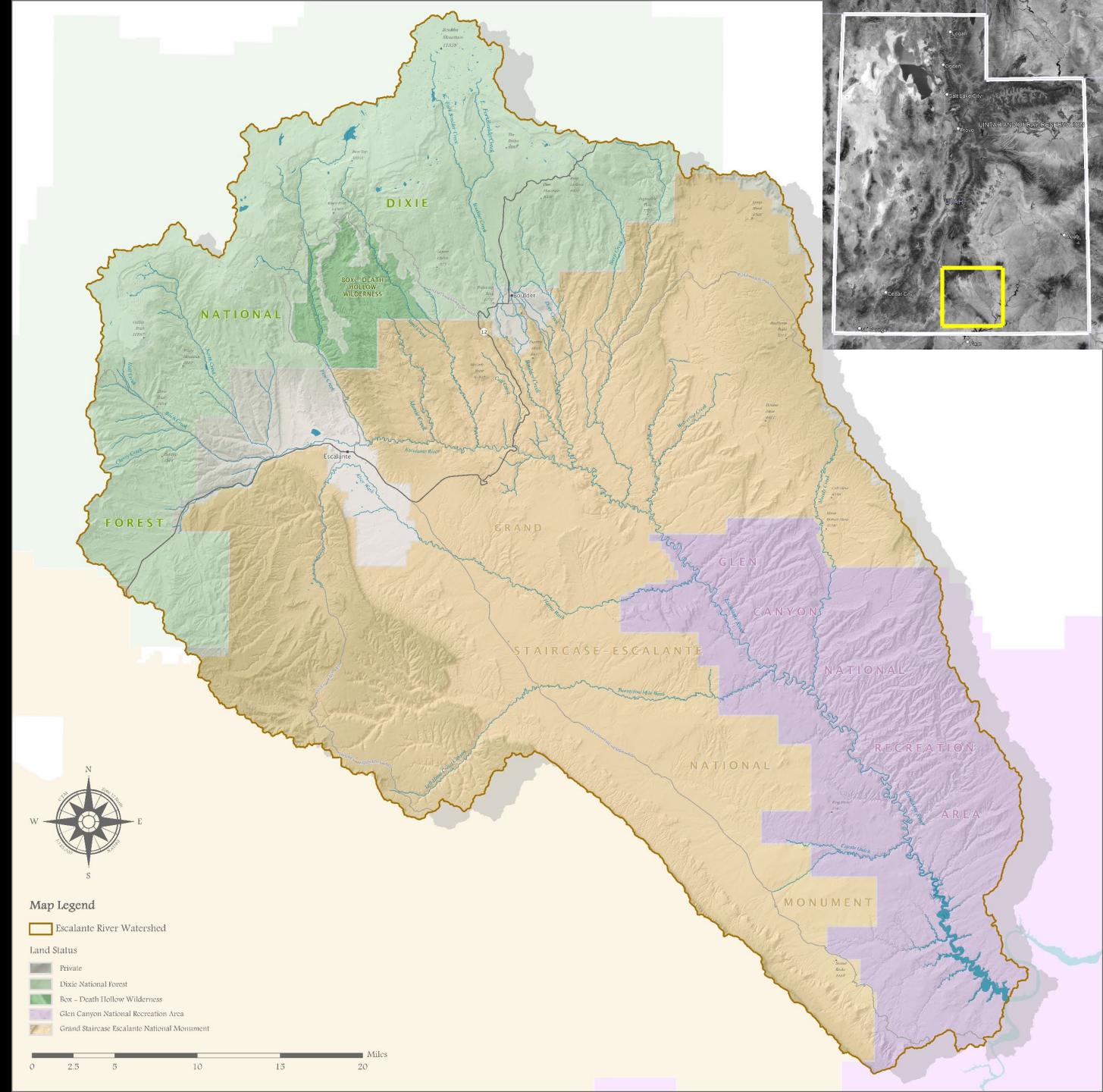
# Overview

The background image shows a vast desert landscape with prominent red sandstone rock formations. In the foreground, there are rugged, layered rock walls. The middle ground features a valley with patches of green shrubs and trees, contrasting with the arid, reddish-brown soil. The sky is bright blue with scattered white clouds. The overall scene is a typical representation of a desert canyon environment.

- History of RO invasion
- Escalante River Watershed Partnership
- Current status
- Lessons learned

# Geography

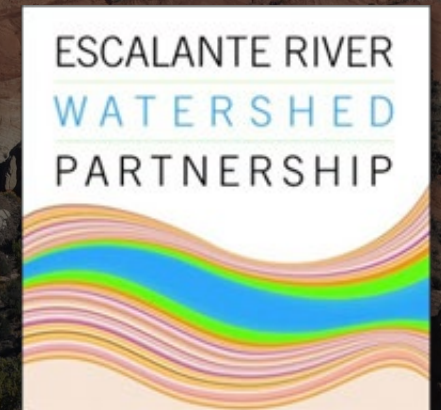
- 1.3 million acres
- 90 river miles
- 7,500 ft. vertical relief
- Free-flowing
- Multi-jurisdictional



# History

- 1950s – RO planted in Escalante & Boulder
- 1980s – RO invades downstream public lands
- 2009 – ERWP founded

- American Packrafting Association
- Ancestral Lands Conservation Corps
- Boulder Community Alliance
- Bureau of Land Management
- Canyon Country Youth Corps
- Cardno
- Conservation Lands Foundation
- Conservation Legacy
- Escalante Canyon Outdoors
- Escalante Outfitters
- Grand Canyon Trust
- Grand Staircase Escalante Partners
- Great Old Broads for Wilderness
- National Park Service
- Natural Resources Conservation Service
- The Nature Conservancy
- Private landowners
- Rim to Rim Restoration
- RiversEdge West
- Sageland Collaborative
- Trout Unlimited
- US Fish & Wildlife Service - Partners for Fish and Wildlife
- US Forest Service
- US Geological Survey
- Utah Conservation Corps
- Utah Division of Forestry, Fire, and State Lands
- Utah Division of Water Quality
- Utah Division of Wildlife Resources
- Utah State University Extension
- Utah Trust Lands Administration
- Wild Arizona
- Wild Utah Project
- Wildlands Network
- Wilderness Volunteers



# Escalante River Watershed Partnership



# Treatment

- Chainsaw & herbicide
- Monitoring
- >\$11 million
- 8,000+ acres





Hwy 12 bridge  
2018, pre-treatment





Hwy 12 bridge  
2019, post-treatment



Hwy 12 bridge  
2022

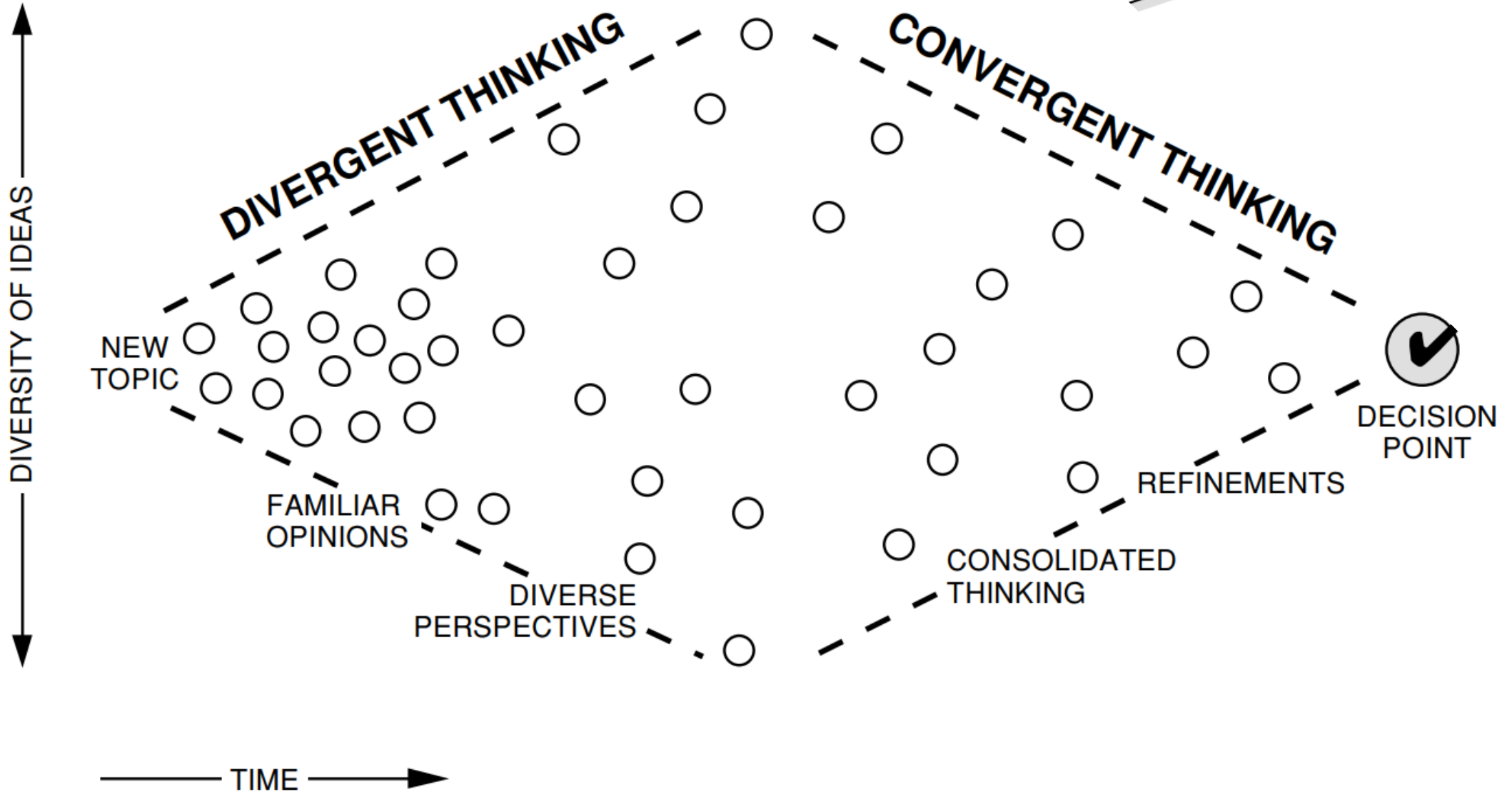
# Current Status

- 2019 – Primary treatment complete
- 2020 – Changed monitoring protocol
- Funding challenges
- ERWP growth & evolution
  - Expanded scope
  - Scientific research
  - Tribal outreach & engagement
  - Long-term cohesion

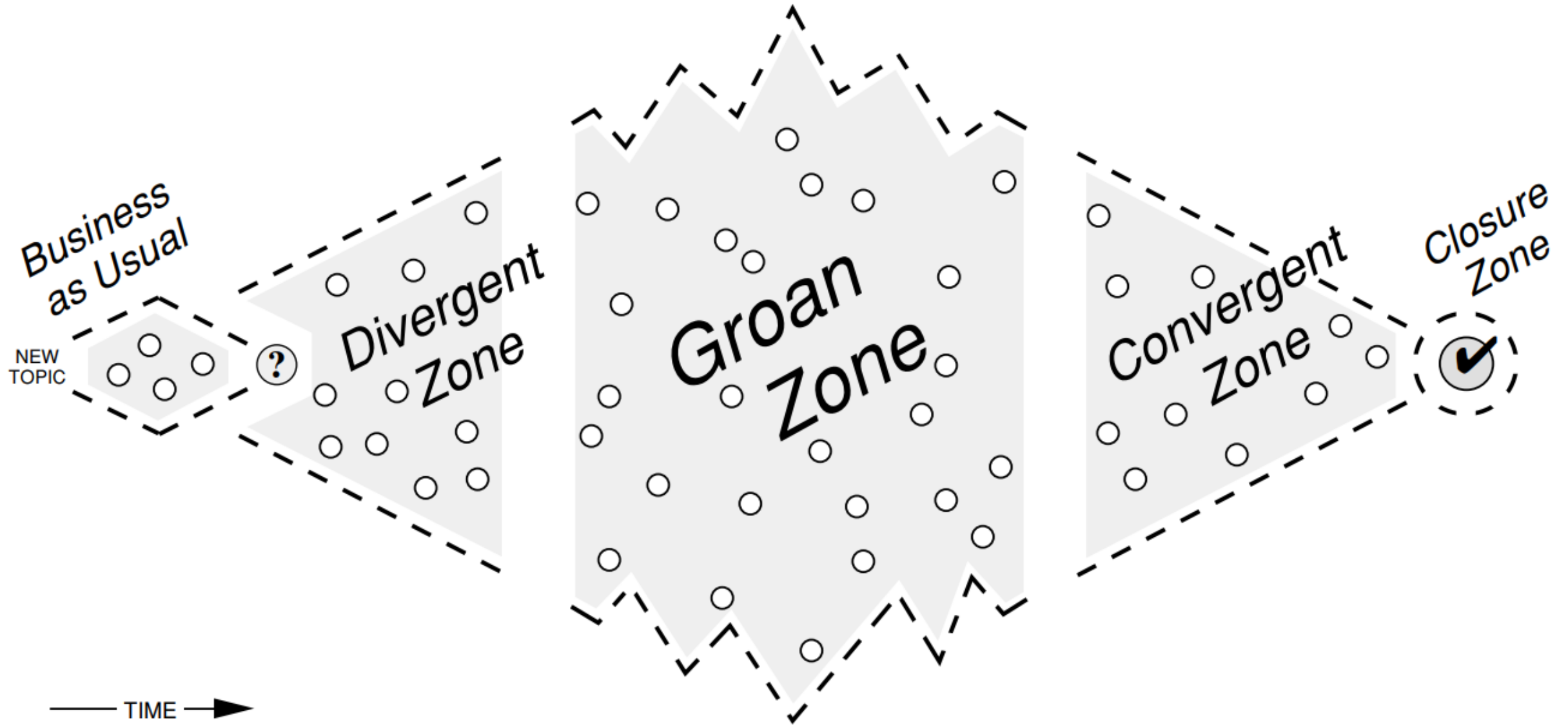


# DYNAMICS OF GROUP DECISION-MAKING

IDEALIZED  
PROCESS



# DYNAMICS OF GROUP DECISION-MAKING



# Lessons Learned

## Data & Monitoring

- Baseline
- Comprehensive

## Institutional Knowledge

- Communication
- Record-keeping

## Group Cohesion

- Post-accomplishment vision
- Impartial facilitator
- Contentious topics

# Recommendations

- Monitoring! – Baseline, comprehensive, continuing
- Consider long-term data needs
- Goals/outcomes to be tracked
- Communication
- Record-keeping

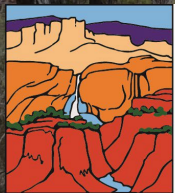
**Kevin Berend**

Conservation Programs Manager

Grand Staircase Escalante Partners

[kevin@gsenm.org](mailto:kevin@gsenm.org)

585-259-4352



GRAND STAIRCASE  
ESCALANTE

PARTNERS



# Grand Staircase Symposium

March 21-23

Talks

Field Trips

Workshops

Live music

Visit:

<https://escalanteriverwatershedpartnership.org>

## GRAND STAIRCASE- ESCALANTE SYMPOSIUM 2024



## AGENDA

21 MARCH

ESCALANTE  
INTERAGENCY VISITOR  
CENTER

755 West Main St, Escalante, UT

9:00 AM

Welcome

- **Escalante River Watershed Partnership**
- **Steve Feldgus** (Department of Interior)
- **Max Early** – Stewardship of Nature through Indigenous Poetry and Song

9:30 AM

Vegetation

- **Carrie Cannon and Jorigine Paya** – An Ethnobotanical Perspective of Several Colorado Plateau Plants
- **Robert D'Andrea** – Climate and human impact on vegetation and fire in an arid Colorado Plateau ecosystem in Western North America
- **Jason Williams** – Ecohydrologic Impacts of Pinyon and Juniper Encroachment on Sagebrush Rangelands
- **Jacqueline Grant & Autumn Gillard** – Development of a Paiute Native Plant Center

12:30 PM

Springs and  
Groundwater

- **Max Taylor** – Hopi Springs Restoration Project
- **Melissa Masbruch** – Hydrogeology 101 of the Escalante River Watershed: Sources, Sinks, and Flow Paths
- **Rhiannon Garrard** – Safeguarding Our Groundwater: Bryce Canyon National Park
- **Georgie Pongyesva** – Springs from an Indigenous Perspective

2:00 PM

Stream and  
Riparian

- **Lydia Joukowsky & Rachel Nichols** – History, Principles of Low-Tech Process-Based Restoration and Post-Assisted Log structures in Fishlake National Forest
- **Lindsay Martindale & Erin Faiferlick** – Beaver Coexistence in the Modern Era
- **Cassie Mellon & Tess Webb** – The BLM AIM Strategy: Riparian and Wetland Monitoring and Assessment in the Grand Staircase-Escalante National Monument

3:30 PM

Paleontology

- **Joe Sertich** – Dinosaur Diversity of Laramidia's Southern Frontier: New Discoveries from Utah's Grand Staircase
- **Alan Titus** – Campanian tyrannosaur diversity of Laramidia; implications of new GSENM specimens

7:00 PM

Live Music

**Innastate @ The Escalante Showhouse (50 W Main St.)**



This program has received funding from Utah Humanities. Utah Humanities (UH) empowers groups and individuals to improve their communities through active engagement in the humanities.