

Lessons Learned

ASSUMPTIONS AND REALITIES
OF RESTORATION ALONGSIDE
THE BEETLE

Dr. Sarah Sayles, Executive Director



The beetle will be here in 7 years

A small crew can take on a multi-million dollar project

Time and resources are key

Assumptions



Lessons Learned



Early funding
pros and cons



Nature had its
own ideas



New best
practices
were learned

Funding

1

Walton funding

Did the funding come too soon?



The size and breadth of the funding completely changed GWP

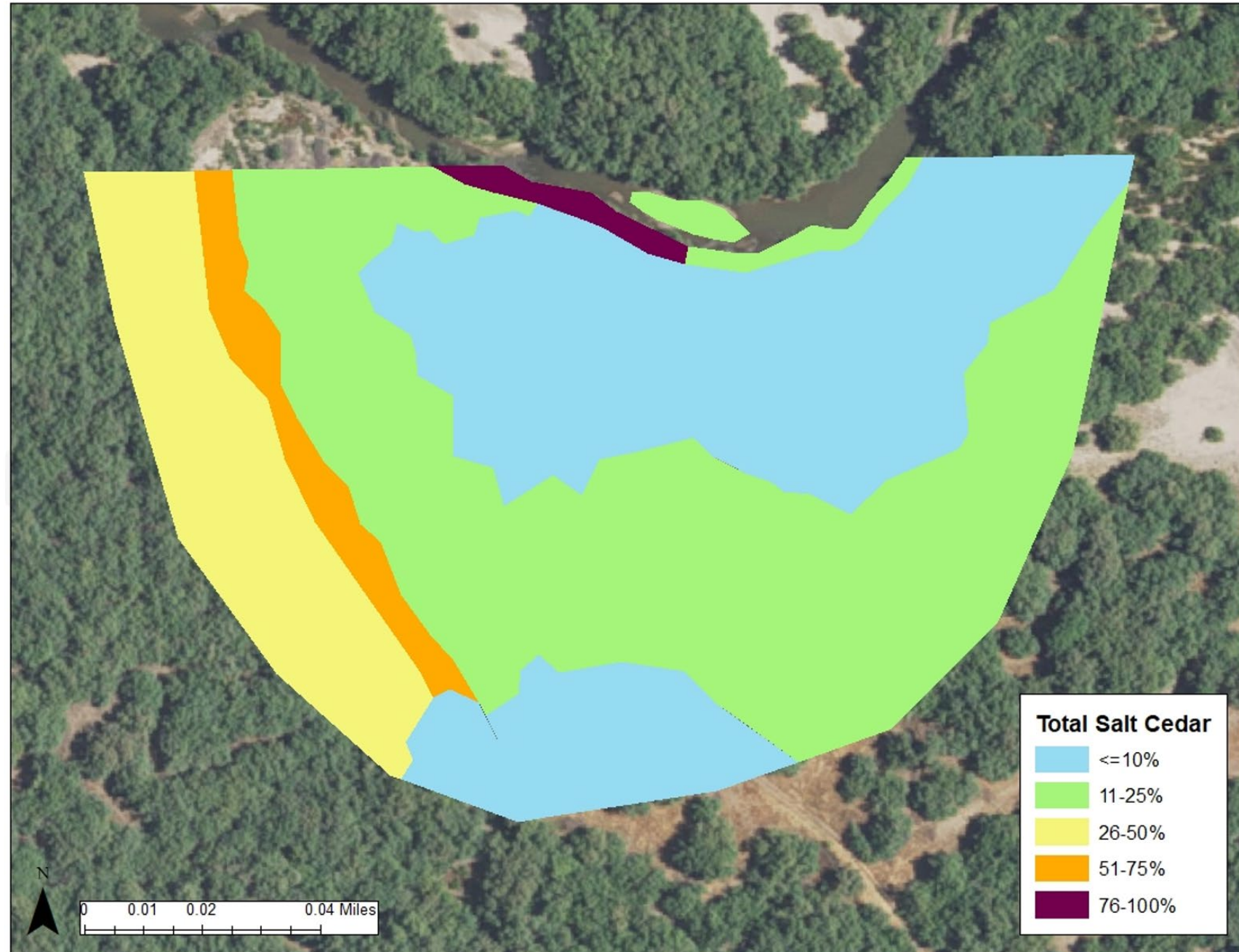


The expectations for the arrival of the beetle were premature



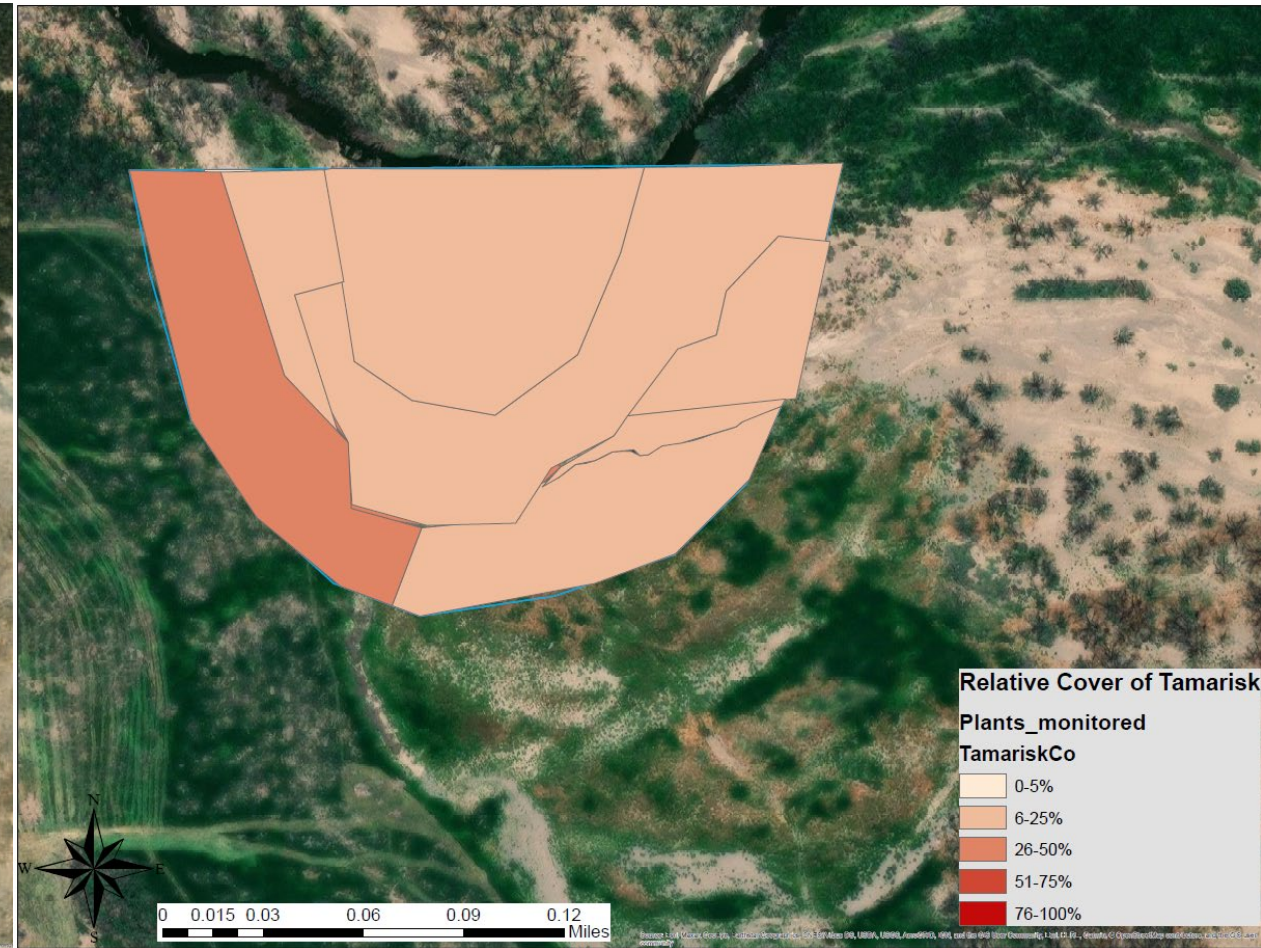
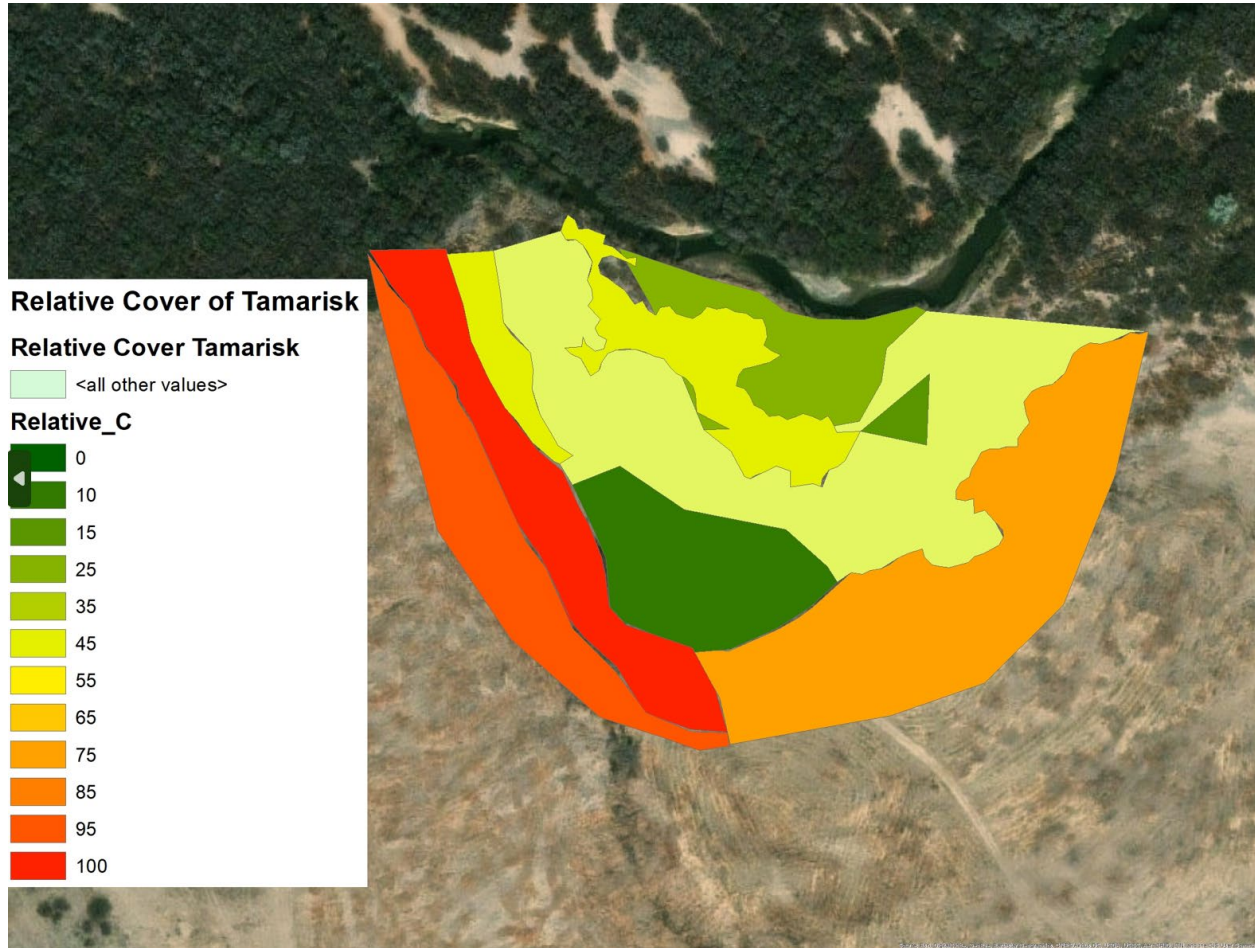
Funding ran out before the projects could really begin to cooperate with the beetle

2019 Tamarisk Monitoring - Ro8 (last year of funding)



2022 before manual removal

2023 following manual removal



Nature

2

-
1. Salt Fire
 - 2017
 2. Flooding
 - 2022
 3. Ongoing drought



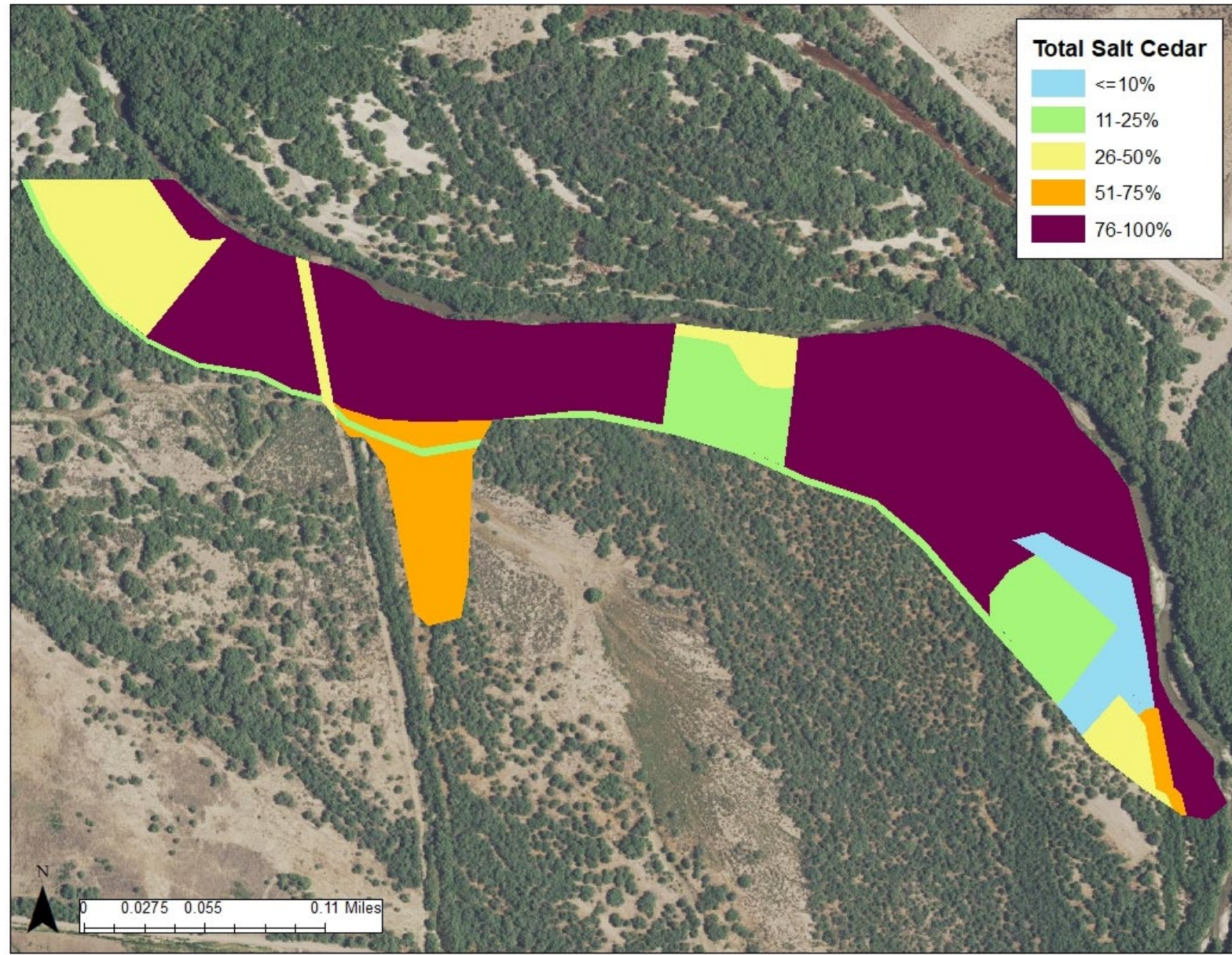
Best practices



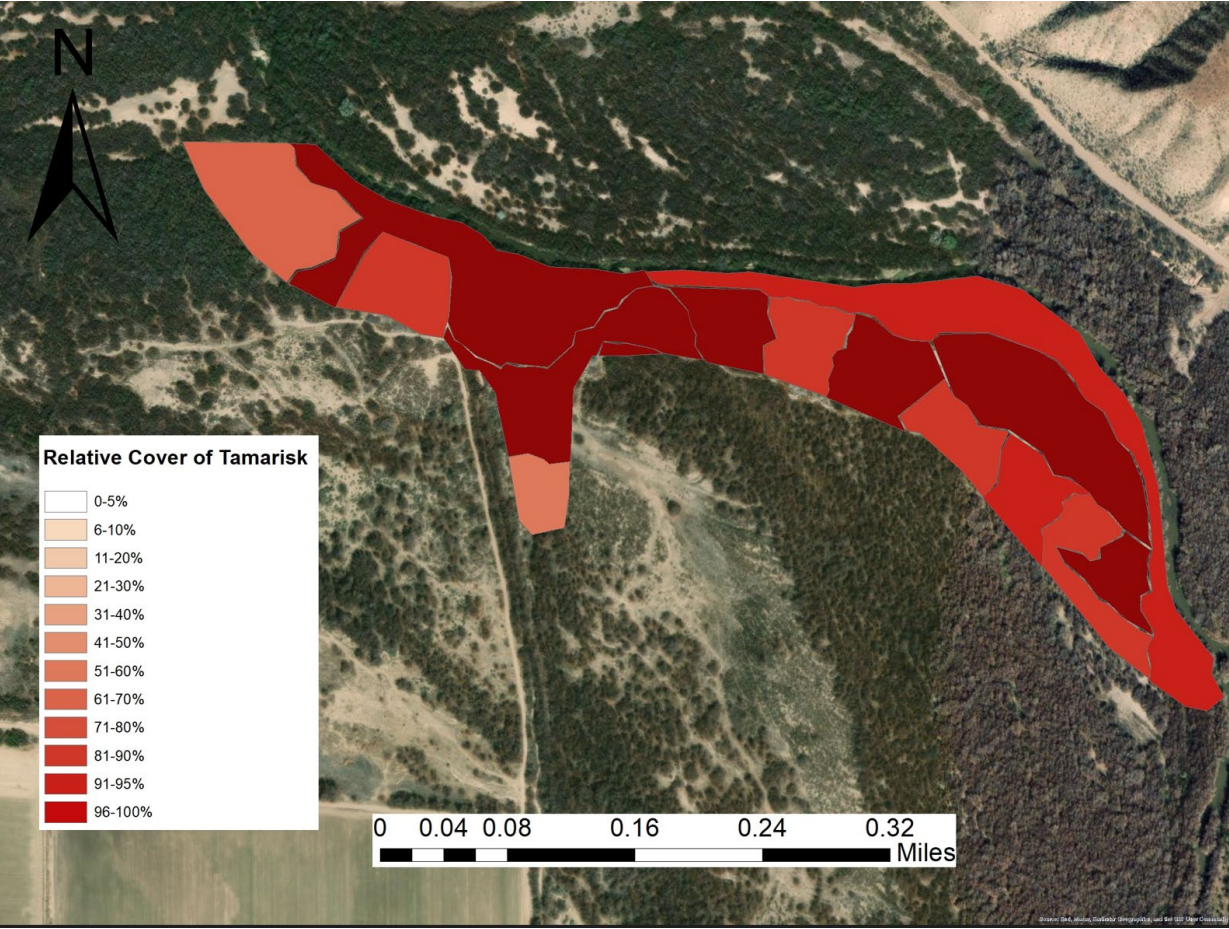


**Basins, plant
grouping**

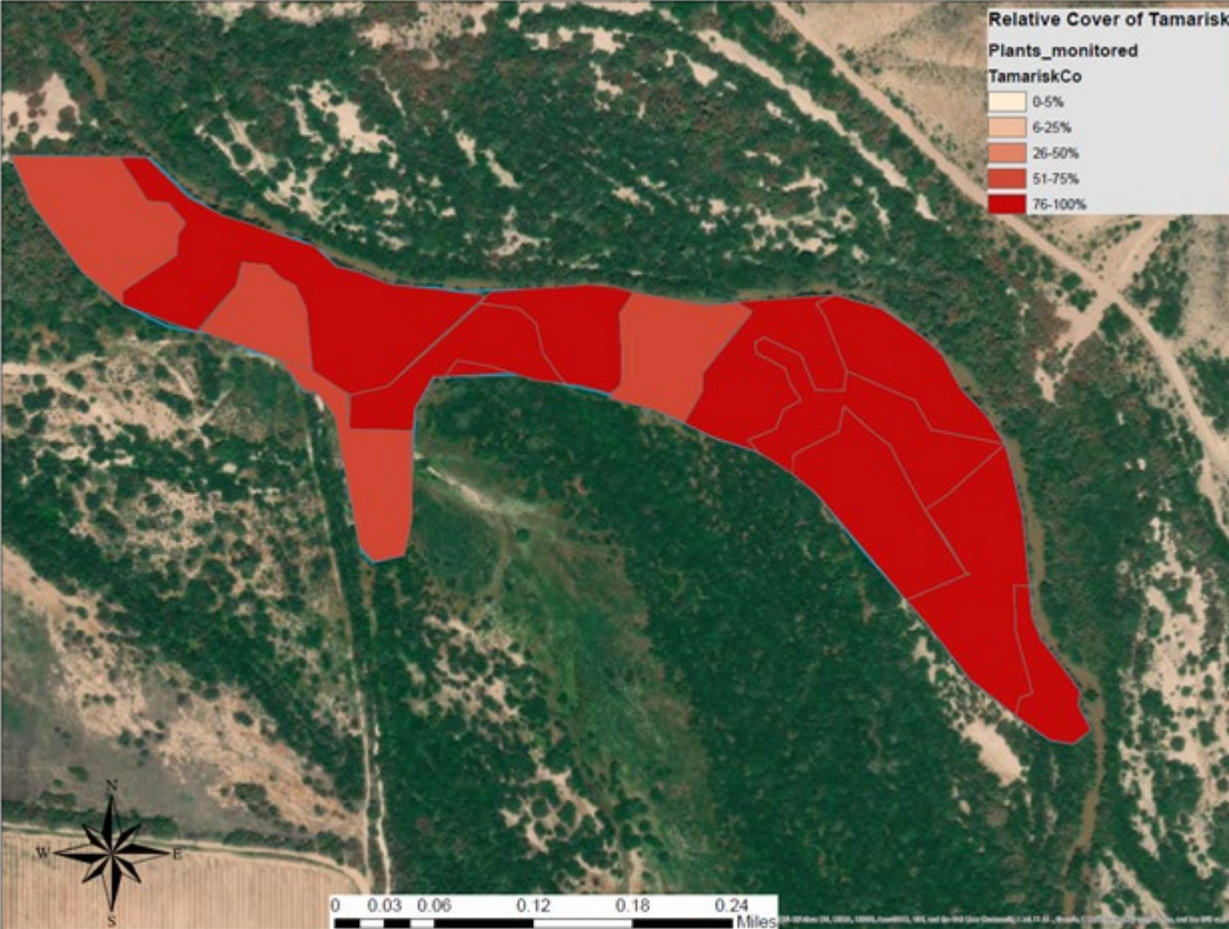
2019 Tamarisk Monitoring - R11 (last year of funding)



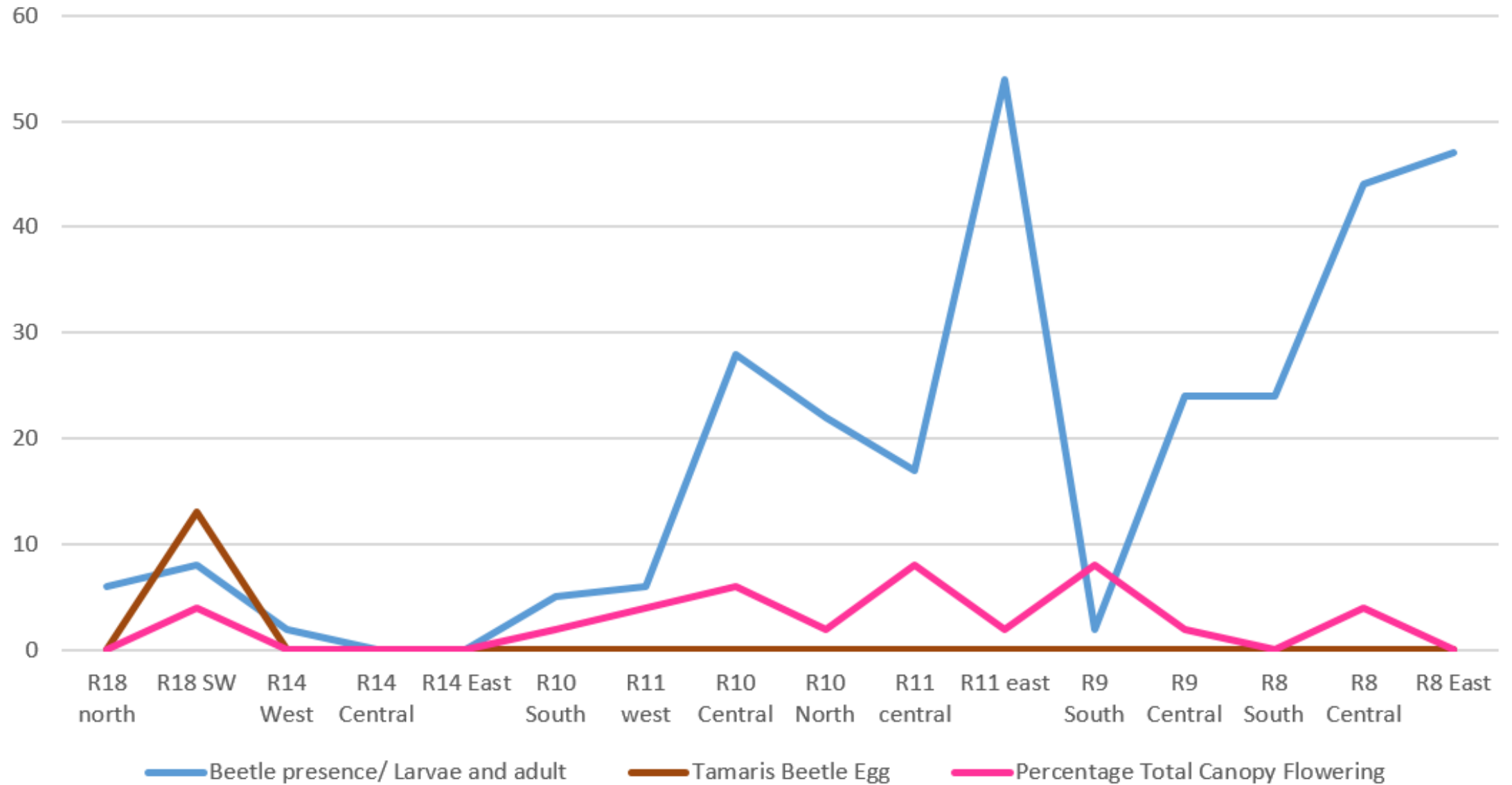
2022 monitoring results, no removal



2023 monitoring results, no removal, first monitoring of beetle



Beetle affect on flowering



Monitoring is a key to success

Collaboration and communication
will move us to the future

The beetle is not going to solve
our tamarisk problem!

Forward





Any questions?

**Dr. Sarah Sayles, Executive Director
Gila Watershed Partnership**

Please take a water bottle!