



# Multi-Stakeholder Restoration Efforts for Pecos Canyon State Park



Susan Sherrod, Emily Stout,  
Joey Fleming, Sydney Salzwedel



# Regional Context of Pecos Canyon State Park •

Headwaters of the Pecos River (926 mi)

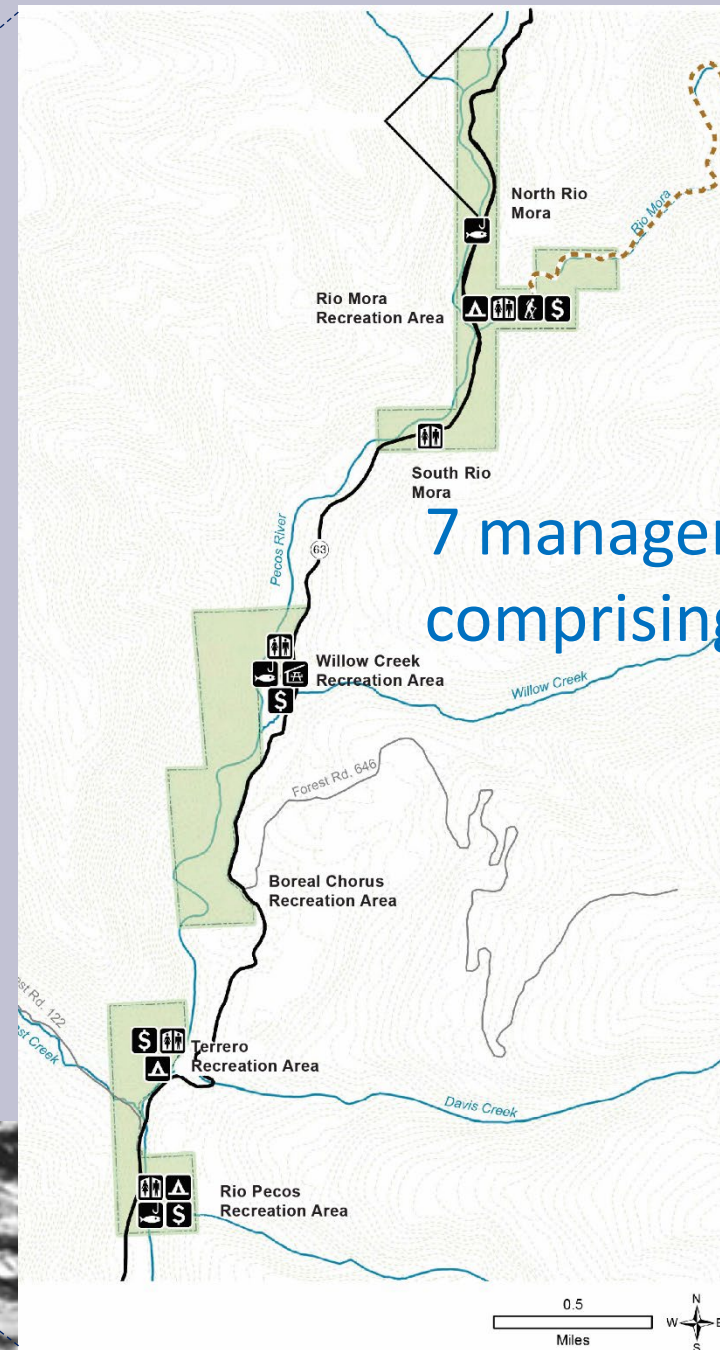
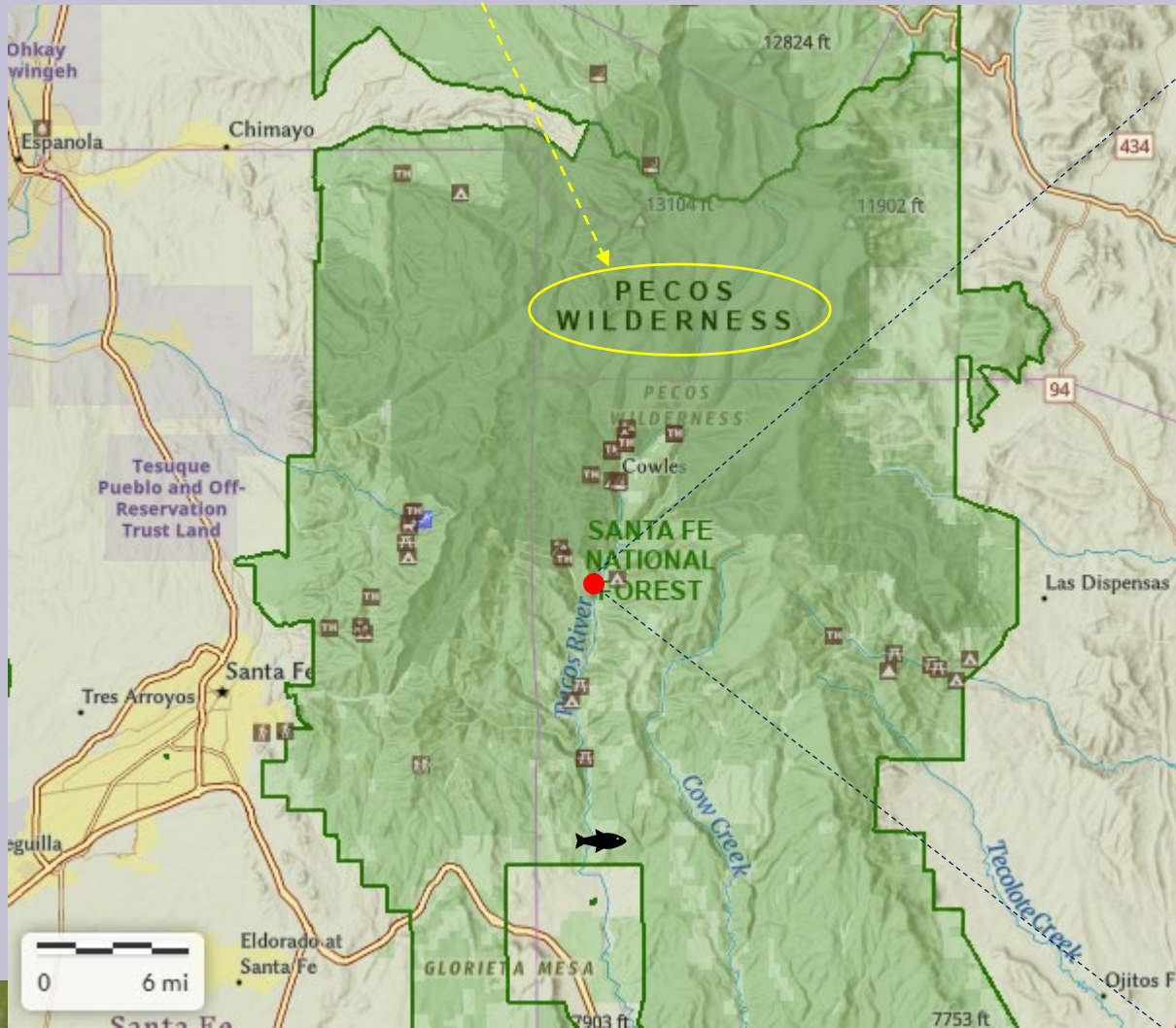


Numerous overlapping tribal lands



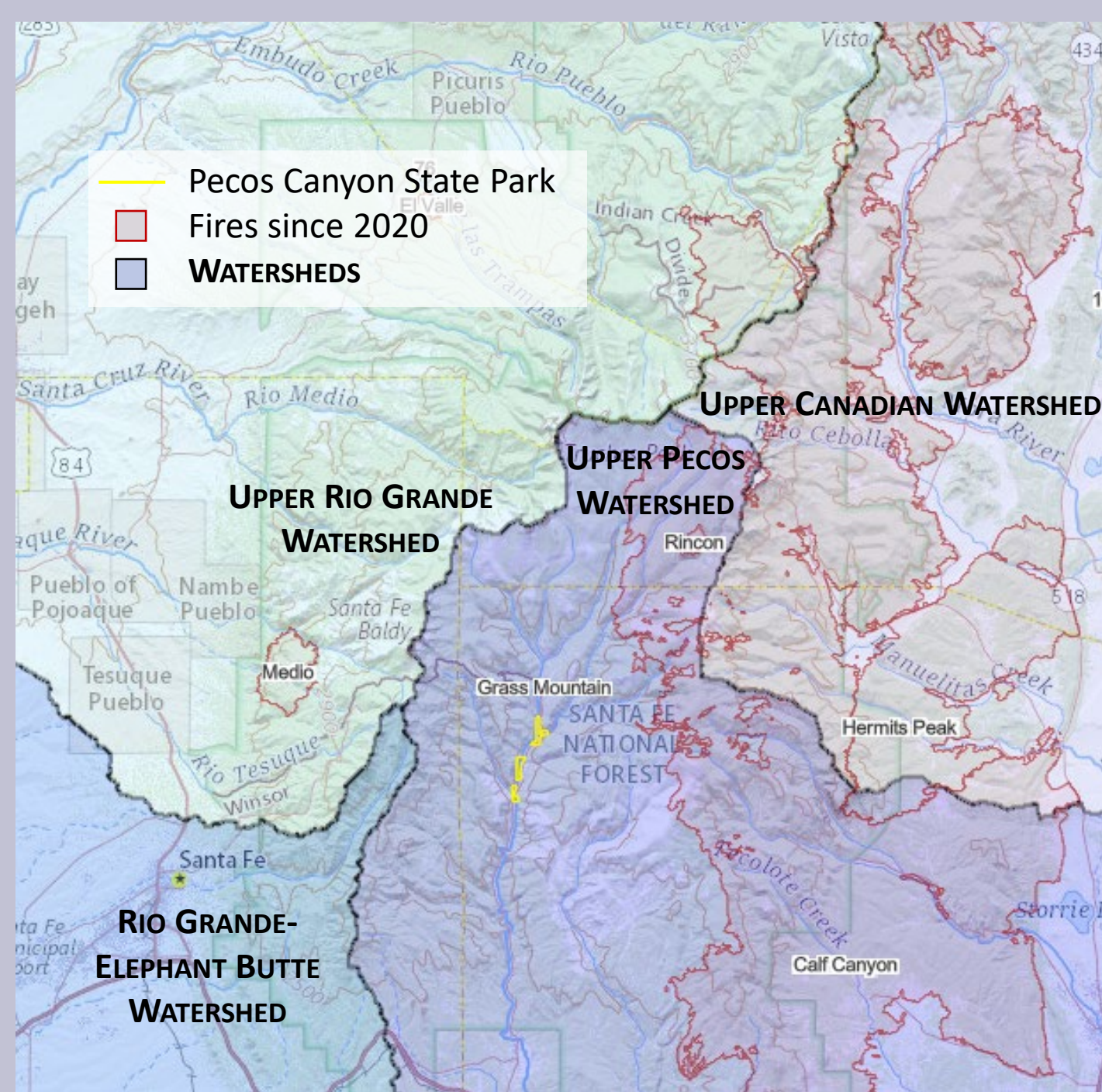


# Gateway to Pecos Wilderness



7 management units  
comprising 378 acres





## Natural Disturbances

- Fire (2022 Hermits Peak/Calf Canyon 342K acres)
- Flooding after fire deposits ash, sediment & degrades water quality

# Key Events

**1882-1939** mining at confluence w/ Willow Creek (inset below)

**1950-87** acquired by State Game Commission, some recreation control measures implemented

**1992** NM Env Department, Game & Fish, DOT, mining company start remediating impacts of historic mining & use of tailings (turning point)

**1999-2003** mine reclamation

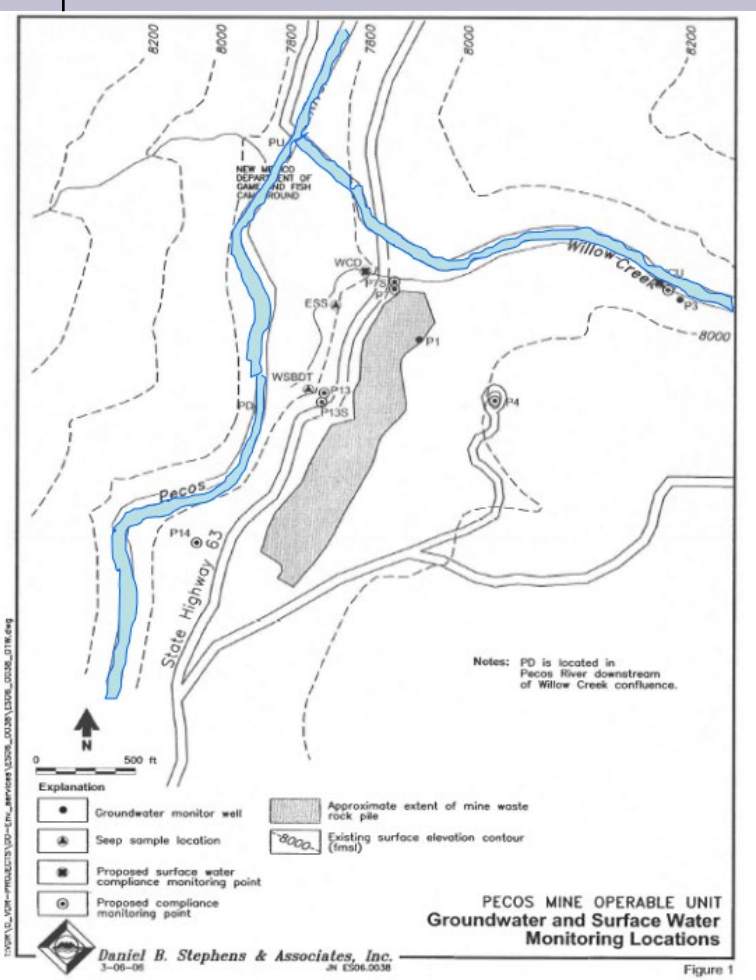
**2010** Upper Pecos Watershed Assoc (UPWA) start large-scale collaboration to develop a State Park. Game & Fish + State Parks start collaborating for same.

**2019** Pecos Canyon State Park formally established, State Parks assumes management

**2021** Management & Framework Planning begins

**2023** Draft Management Plan posted

**Ongoing** State Parks, UPWA, G&F, USFS, DOT coordinate efforts for community events







# Pecos Canyon Stakeholders include:

## Tribal communities

### Local:

Upper Pecos Watershed Association (UPWA)  
Village of Pecos  
Pecos Canyon Volunteer Fire & Rescue  
Pecos Independent School District  
Pecos Benedictine Monastery  
Adjacent private landowners & neighbors  
Outdoor organizations e.g. Trout Unlimited, American Rivers, conservation & hiking groups

### Counties:

Mora Co.  
San Miguel Co. incl. Sheriff's Office

### State of New Mexico:

Game & Fish (landowner)  
State Parks (manager)  
Forestry Division  
Public Safety Dept.  
Transportation Dept.  
Historic Preservation Office

### Federal:

Army Corps of Engineers  
BLM  
Forest Service (Santa Fe Nat'l Forest)  
Fish & Wildlife Service  
NPS (Pecos National Historic Park)

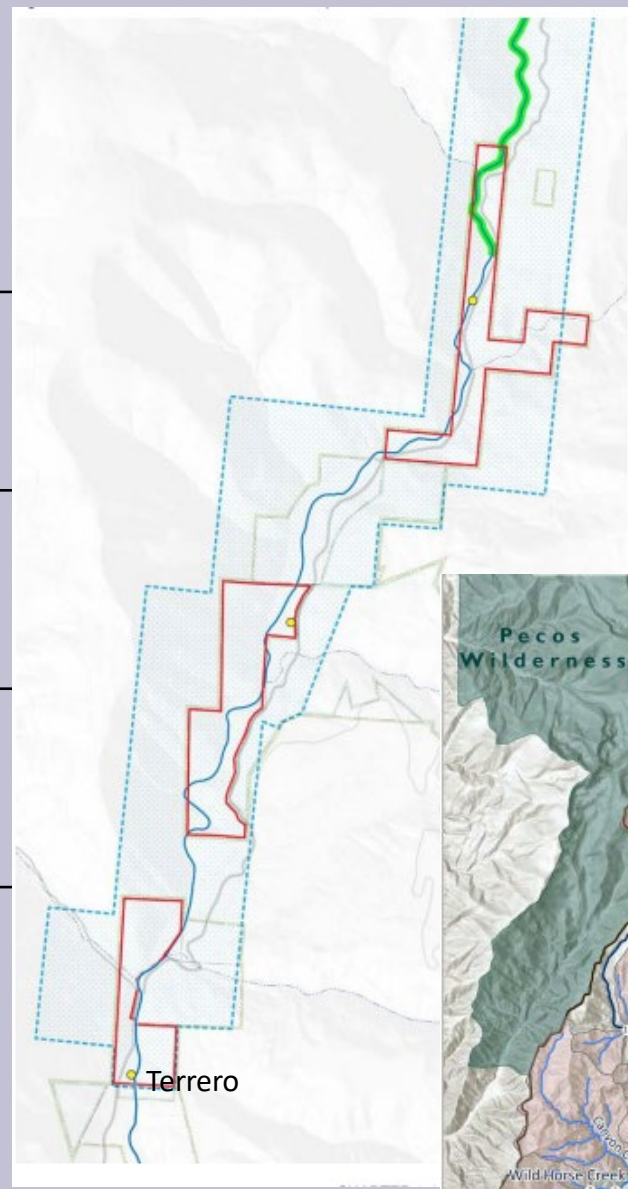


### *Mission:*

To protect and enhance natural and cultural resources, provide first-class recreational and education facilities and opportunities, and promote public safety to benefit and enrich the lives of visitors.

# Formal / Legal Recognition

<i>Date</i>	<i>Agency</i>	<i>Action</i>
1990	USFS	Wild & Scenic River north of Terrero
2010	Dept of Game & Fish	“Green Chile” Special Trout Waters
July 2022	Water Quality Control Board	Outstanding Waters (watershed, far right)
Oct 2023	State House & Senate	Pecos Watershed Protection Act introduced



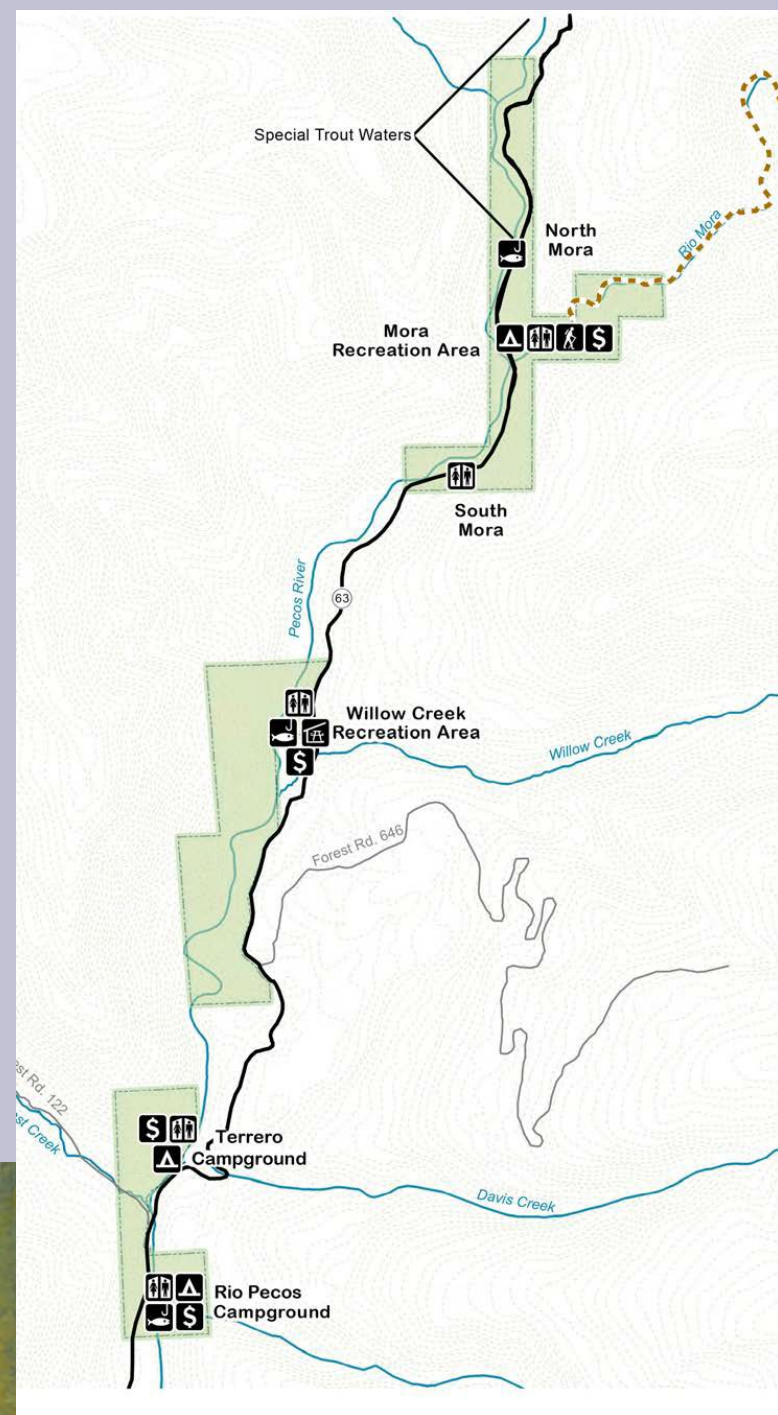
- Pecos Canyon State Park
- Wild & Scenic River
- ~ Special Trout Waters



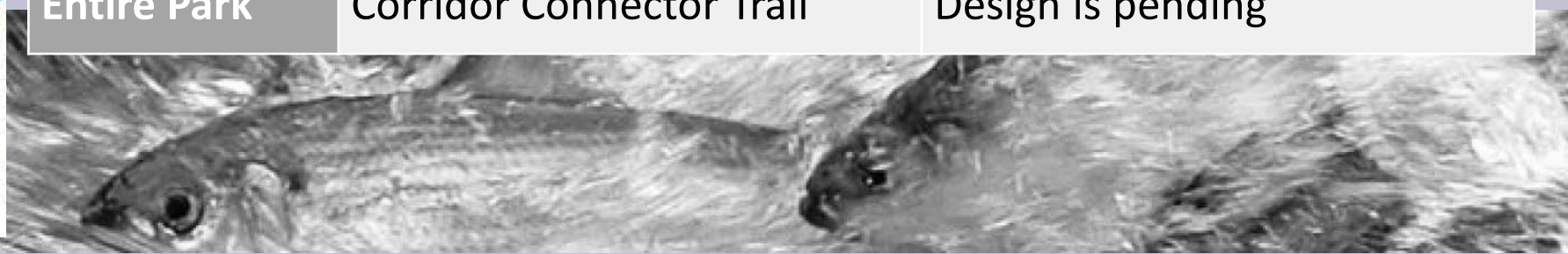
Maps were created using USGS NHDPlus High-resolution and USFWS National Wetlands Inventory data sources. The labels on the map do not necessarily correspond to WCC and NMED hydrology determinations.



# Phased Restoration & Improvements



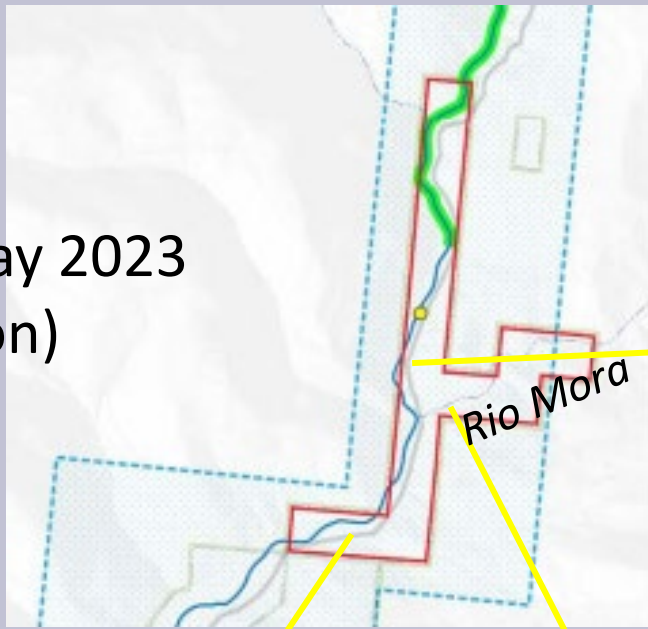
Site	Design Elements	Status
South Mora Day-Use Area	Fishing Platform Picnic Area	Construction outside of OHW started in 2023
North Mora Day-Use Area	Fishing Platform Connector Trail Crossing Parking Lot	Design is complete, construction to start 2024 pending permitting
Rio Mora Campground	Pedestrian Bridge 2 Trail Crossings	Design is underway
Rio Pecos Campground & Day-Use Area	Pedestrian Bridge 3 Fishing Platforms Fishing Pier Campground / Day-Use Area	Design is underway
Terrero & Willow Creek		Design is pending
Entire Park	Corridor Connector Trail	Design is pending





# Confluence w/ Rio Mora

Photos: spring runoff May 2023  
(OHW delineation)



South Mora



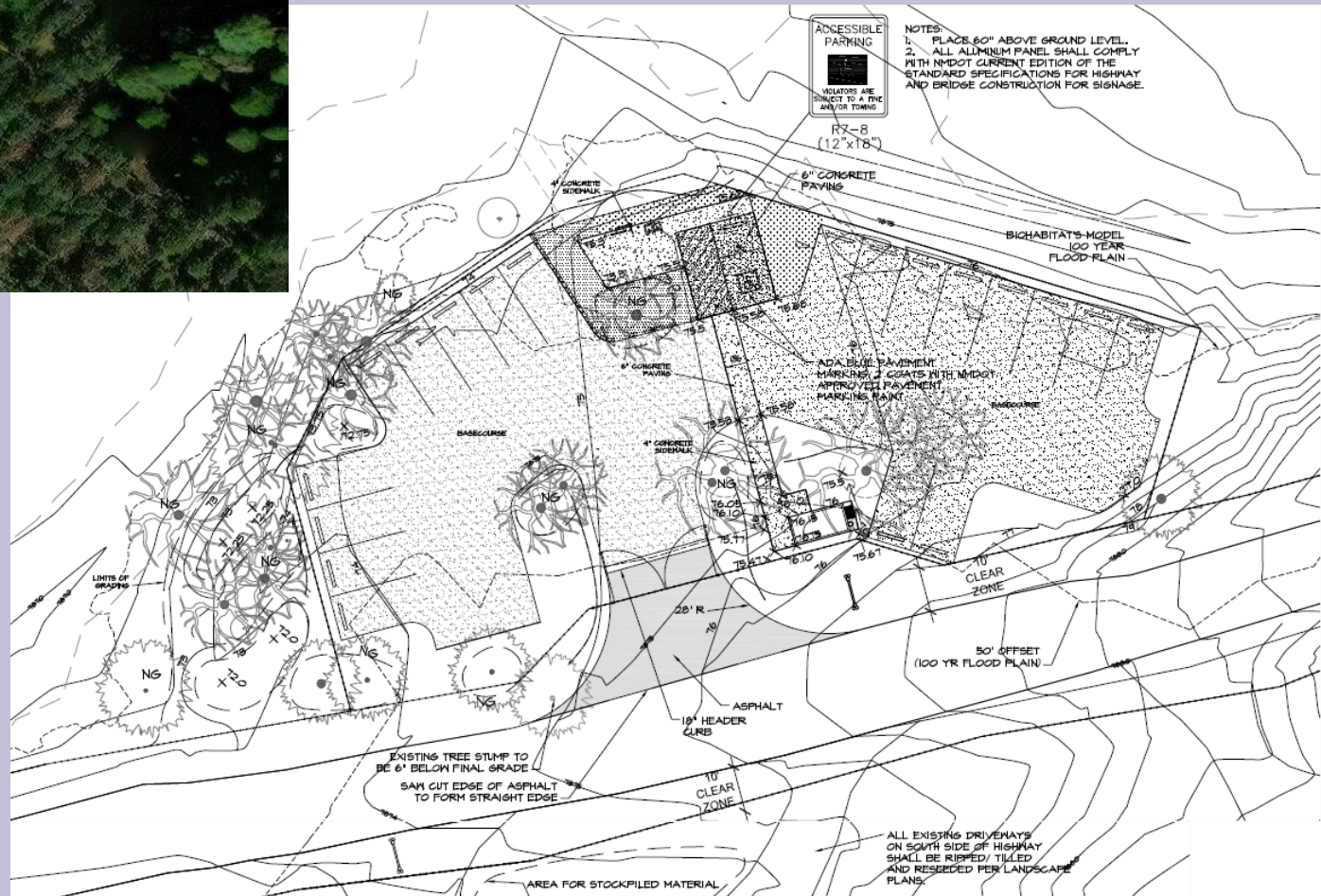
(Central) Mora  
Campground





# South Mora Day-Use Area

Picnic area (design below)  
Fishing platform pending permitting

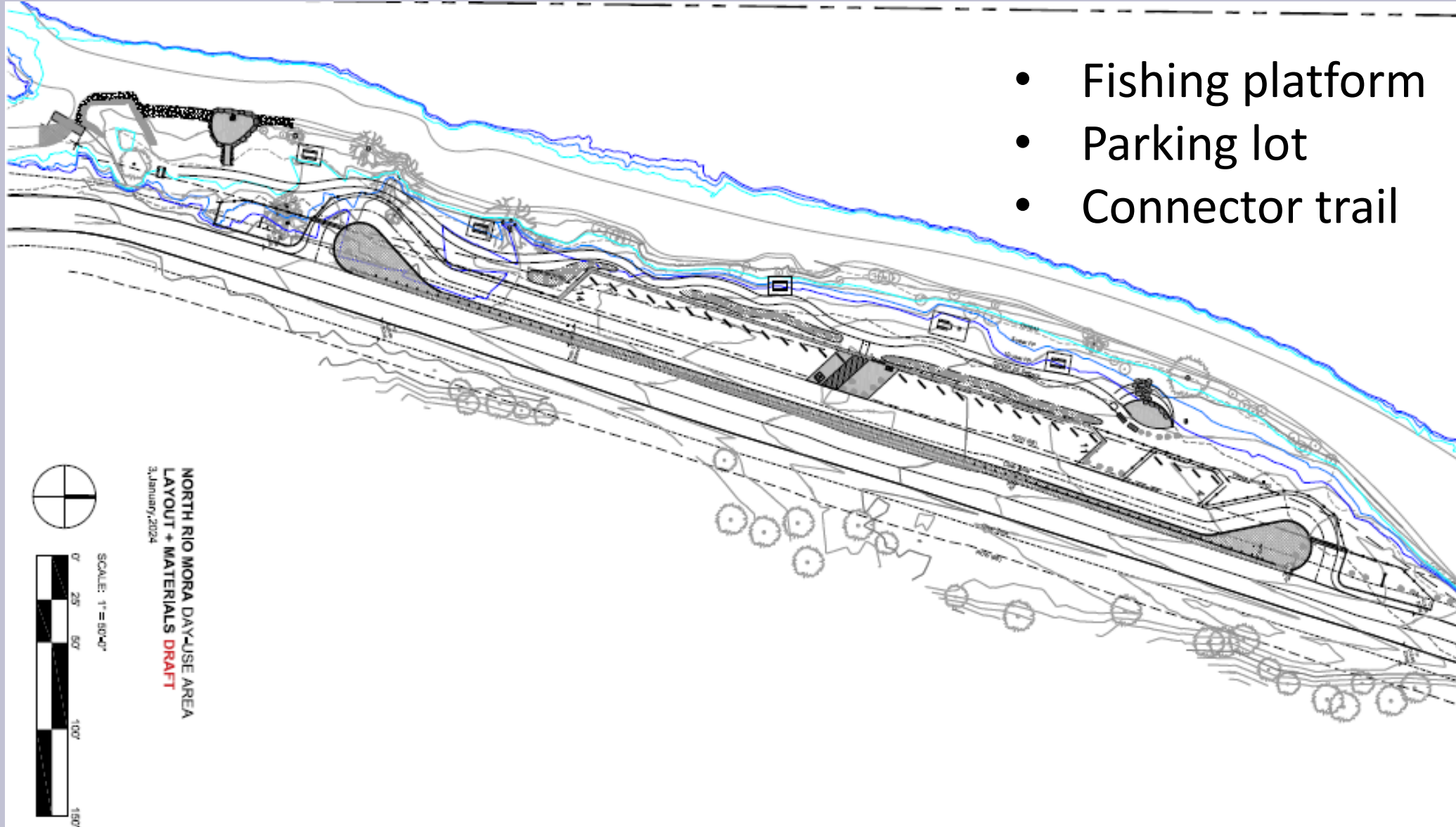


## Permitting:

- Wild & Scenic River (submitted)
- CWA Section 404 (in development; linear transportation for crossings, recreational facilities for fishing, restoration)
- No critical habitat



# North Mora Day-Use Area (construction & permitting pending, design partially complete)



## Pecos Canyon State Park: Region

Approximate location, San Miguel Co.

~15 mi ENE of Santa Fe (1h by car)

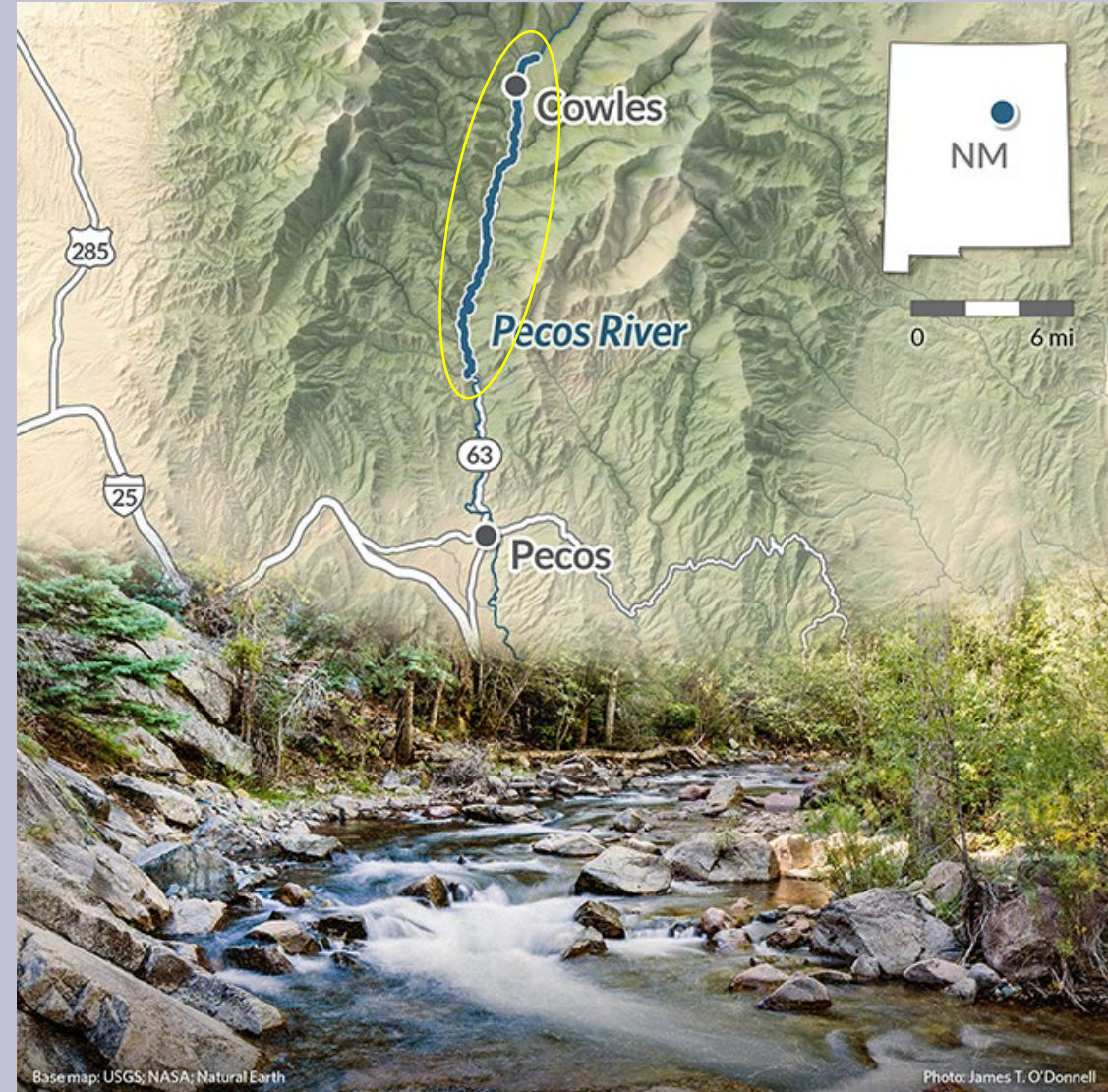
Historic overlapping lands of Ute, Lipan Apache, Jicarilla Apache, and Pueblo Nations





# Key Events

- 1882-1939 mining at confluence w/ Willow Creek (reclam. 1999-2003; left)
- 1950-87 acquired by State Game Commission, recreation demands outweigh conservation (center)
- 1990 Upper reaches designated Wild & Scenic River
- 2019 State Parks assumes management of *Pecos Canyon State Park*
- 2021 Management & Framework Planning begins
- 2022 *Outstanding Nat'l Resource Waters* for Upper Pecos Watershed (rt)
- 2023 Draft Management Plan posted





# Key Events

- 1882-1939 mining at confluence w/ Willow Creek (reclam. 1999-2003; left)
- 1950-87 acquired by State Game Commission, implemented some recreation control measures
- 1992 NM Env Department, Game & Fish, DOT, mining company start remediating impacts of historic mining & use of tailings
- 2010 Upper Pecos Watershed Assoc initiated large-scale collaboration to develop a State Park. Game & Fish/State Parks started collaborating for same.
- 2019 Pecos Canyon State Park formally established, State Parks assumes management
- 2021 Management & Framework Planning begins
- 2023 Draft Management Plan posted
- Ongoing State Parks, UPWA, G&F, USFS, DOT coordinate efforts for community events



2022 *Outstanding Nat'l Resource Waters* for Upper Pecos Watershed

Upper reaches designated Wild & Scenic River