



WHITE RIVER PARTNERSHIP

Partnership Meeting
December 9, 2024
1:00-2:30



WHITE RIVER PARTNERSHIP

Partnership Meeting Draft Agenda

December 9, 2024, 1:00-2:30

Join Zoom Meeting

<https://us02web.zoom.us/j/89083910820?pwd=1DlrqaKCimbCKIE7dczYBtrUwfIDPc.1>

Meeting ID: 890 8391 0820

Passcode: 426423

- 1:00** Introductions and Background (John Leary, RiversEdge West)
- 1:10** The Nature Conservancy Riparian Restoration Program Intro (Joe Leonhard, TNC)
- 1:15** White River Alliance Beaver Projects (Shawn Welder/Deirdre Macnab, WRA)
- 1:20** Beaver Projects and Funding (Phaedra Budy, Utah State University)
- 1:25** White River Projects in Colorado (John Leary, RiversEdge West)
- 1:35** White River Restoration in Utah (TBD, Utah Conservation Corps)
- 1:50** Southam Canyon Mastication Drone Imagery (Wally Macfarlane and Dallin Baker, Utah State University)
- 2:10** Other Partner Updates
- 2:20** Questions and Discussion, Next Steps (John Leary, RiversEdge West)
- 2:30** Adjourn

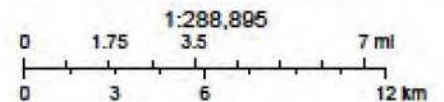


| Site/area | Invasive Initial Treatment (acres) | Invasive Retreatment (acres) | Revegetation (acres) | Conservation Corps members engaged |
|-----------------|------------------------------------|------------------------------|----------------------|------------------------------------|
| Yellow Creek | 2.5 | 0 | 1 | 9 |
| West of Rangely | 1 | 9 | 0 | 3 |
| Big Trujillo | 16.5 | 0 | 2 | 8 |
| Total | 21 | 9 | 3 | 20 |

WRP restoration



12/8/2024

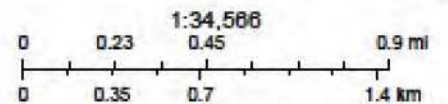


Earthstar Geographics, Esri, TomTom, Garmin, SafeGraph, METINASA, USGS, Bureau of Land Management, EPA, NPS, USDA, USFWS

WRP restoration



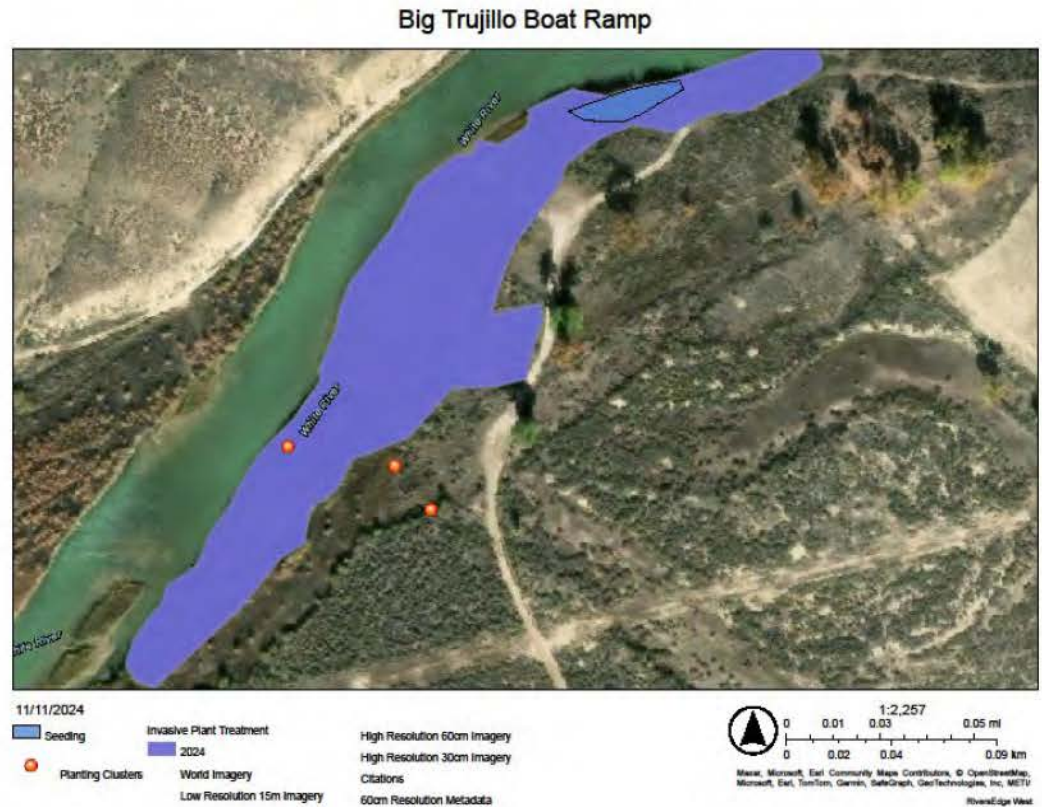
12/8/2024



Esri, TomTom, Garmin, SafeGraph, GeoTechnologies, Inc, METINASA, USGS, Bureau of Land Management, EPA, NPS, US Census Bureau, USDA



Big Trujillo-Boat Ramp area





Big Trujillo-Boat Ramp area





Big Trujillo-Boat Ramp area



WHITE RIVER
PARTNERSHIP



RiversEdge West
RESTORE · CONNECT · INNOVATE



Big Trujillo-Boat Ramp area



After mastication
3/19/24