



Big Trujillo-Boat Ramp area



Tamarisk regrowth
8/26/24



WHITE RIVER
PARTNERSHIP



RiversEdge West

RESTORE + CONNECT + INNOVATE



Big Trujillo-Boat Ramp area



After foliar
herbicide
9/30/24



WHITE RIVER
PARTNERSHIP

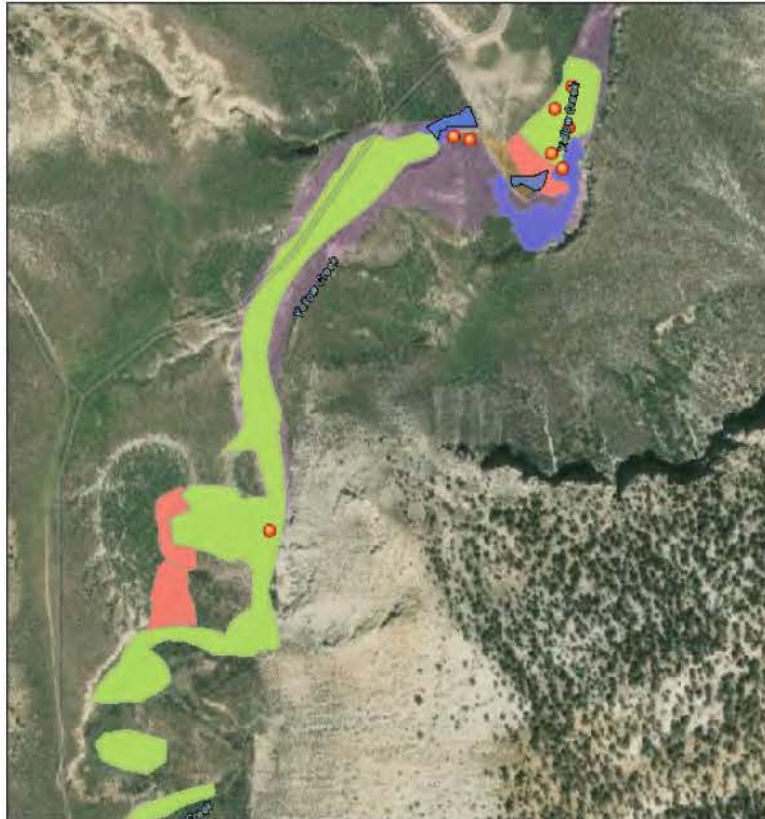


RiversEdge West
RESTORE + CONNECT + INNOVATE



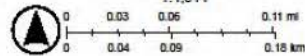
Yellow Creek

Yellow Creek North



11/11/2024

- Seeding
 - 2023
 - 2024
 - 2022
 - Planting Clusters
 - 2023
 - 2024
- Invasive Plant Treatment
- 2023
 - 2022
 - 2024
- Restoration
- 2023
 - 2024



Earl Community Maps Contributors, © OpenStreetMap, Microsoft, Esri, TomTom, Garmin, SafeGraph, GeoTechnologies, Inc. METRNASA, USGS, Bureau of Land Management, EPA, NPS, US Census Bureau, USDA, USFWS, Mearl

RiversEdge West
WHITE RIVER
PARTNERSHIP



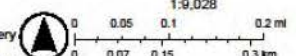
WRP restoration



12/9/2024

- 2023
- Invasive Plant Treatment
- 2023
- World Imagery
- Low Resolution 15m Imagery

- High Resolution 60cm Imagery
 - High Resolution 30cm Imagery
- Citations
- 2.4m Resolution Metadata



Earl Community Maps Contributors, © OpenStreetMap, Microsoft, Esri, TomTom, Garmin, SafeGraph, GeoTechnologies, Inc. METRNASA, USGS, Bureau of Land Management, EPA, NPS, US Census Bureau, USDA, USFWS, Mearl

RiversEdge West
RESTORE + CONNECT + INNOVATE



Yellow Creek





Big Trujillo

Big Trujillo North and Southwest Sites



11/11/2024

Invasive Plant Treatment

2024

2023

World Imagery

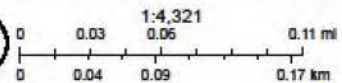
Low Resolution 15m Imagery

High Resolution 60cm Imagery

High Resolution 30cm Imagery

Citations

1.2m Resolution Metadata



Esri, Community Maps Contributors, © OpenStreetMap, Microsoft, Esri, TomTom, Garmin, Swisstopo, GeoTechnologies, Inc, METI, Google



WHITE RIVER
PARTNERSHIP



RiversEdge West

RESTORE + CONNECT + INNOVATE



Side Channel

White River flow
direction



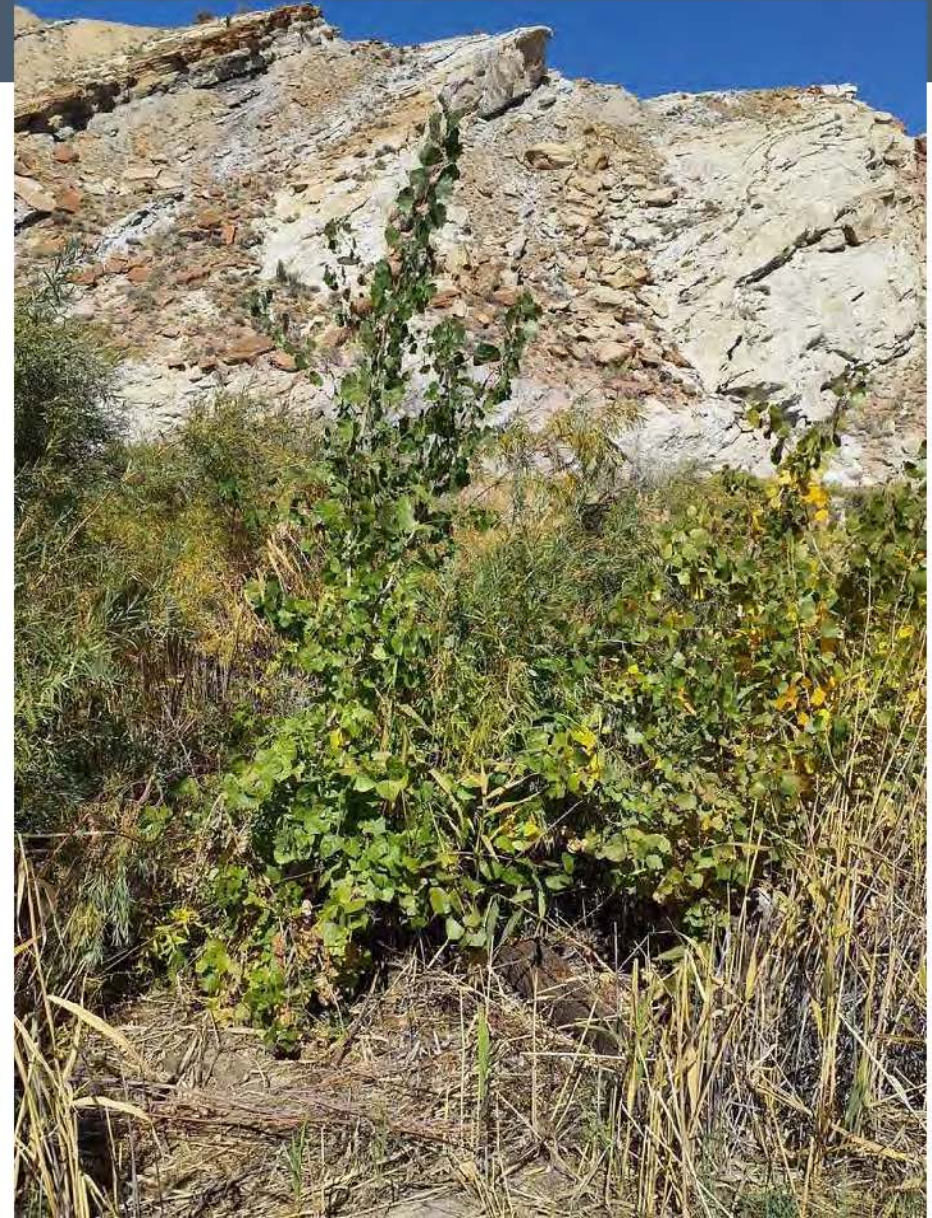
Side channel flow
direction



WHITE RIVER
PARTNERSHIP

 **RiversEdge West**
RESTORE + CONNECT + INNOVATE

Big Trujillo



Other partner updates-Districts/WRIWI

- White River and Douglas Creek Conservation Districts
 - Integrated Water Initiative: <https://www.whiterivercd.com/white-river-integrated-water-initiative>
- Riparian Assessments - Kari Brennan (Coordinator)
 - Proper Functioning Condition (PFC) Assessments
 - Also diversion assessments
 - All on private land
- 2024-completed 7 PFC assessments
 - 28 total since 2022 (?)
 - Continuing to outreach this to potentially interested landowners
 - Also checking landowner interests in riparian improvement opportunities based on these

