

Yearly Distribution (2007 - 2012) of Tamarisk Leaf Beetle (*Diorhabda* spp.)

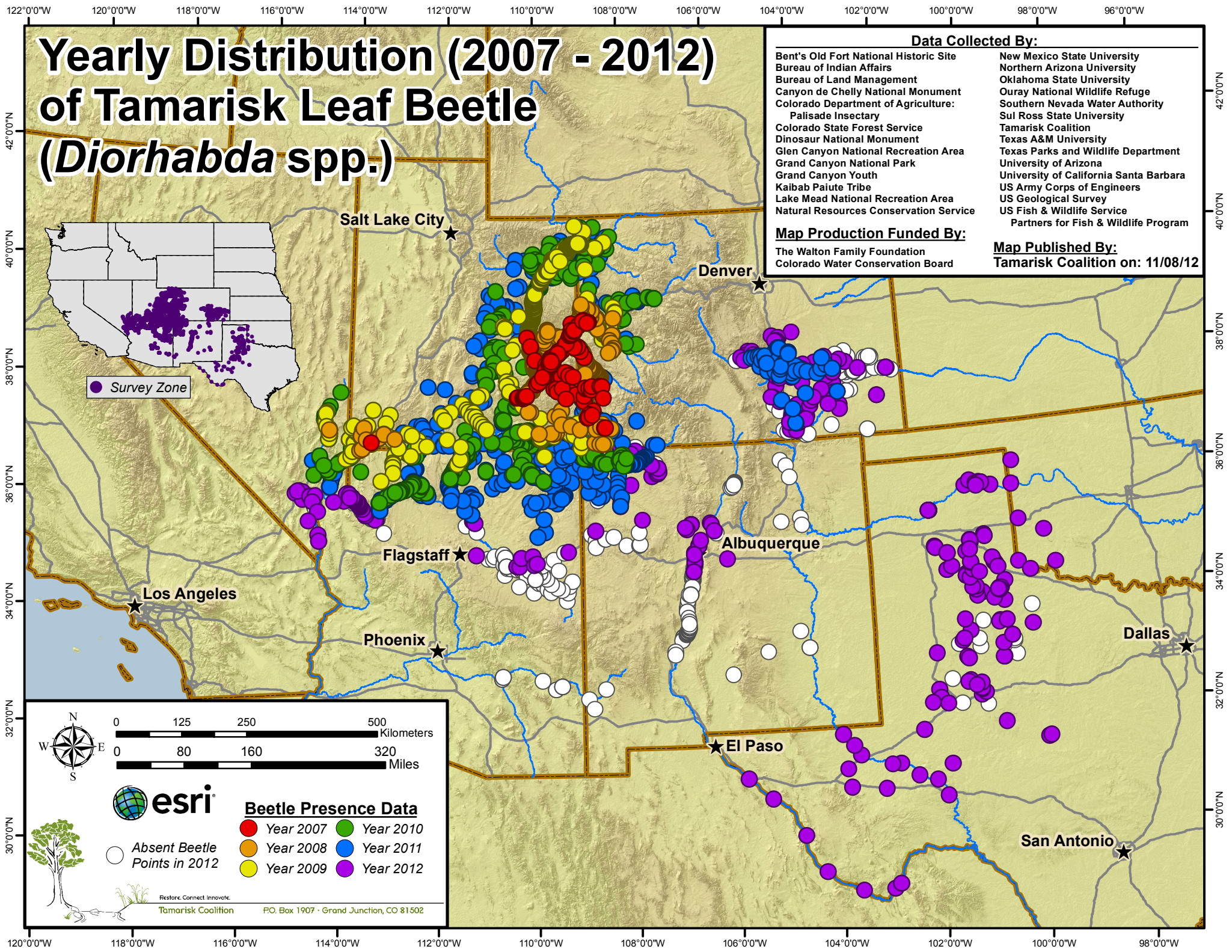
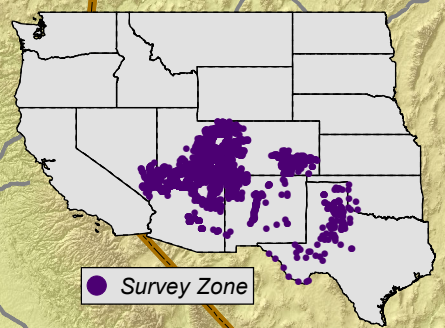
Data Collected By:

- Bent's Old Fort National Historic Site
- Bureau of Indian Affairs
- Bureau of Land Management
- Canyon de Chelly National Monument
- Colorado Department of Agriculture: Palisade Insectary
- Colorado State Forest Service
- Dinosaur National Monument
- Glen Canyon National Recreation Area
- Grand Canyon National Park
- Grand Canyon Youth
- Kaibab Paiute Tribe
- Lake Mead National Recreation Area
- Natural Resources Conservation Service
- New Mexico State University
- Northern Arizona University
- Oklahoma State University
- Ouray National Wildlife Refuge
- Southern Nevada Water Authority
- Sul Ross State University
- Tamarisk Coalition
- Texas A&M University
- Texas Parks and Wildlife Department
- University of Arizona
- University of California Santa Barbara
- US Army Corps of Engineers
- US Geological Survey
- US Fish & Wildlife Service
- Partners for Fish & Wildlife Program

Map Production Funded By:

- The Walton Family Foundation
- Colorado Water Conservation Board

Map Published By:
Tamarisk Coalition on: 11/08/12



esri

Beetle Presence Data

- Year 2007 (Red circle)
- Year 2008 (Orange circle)
- Year 2009 (Yellow circle)
- Year 2010 (Green circle)
- Year 2011 (Blue circle)
- Year 2012 (Purple circle)
- Absent Beetle Points in 2012 (White circle)

Restore. Connect. Innovate.
Tamarisk Coalition P.O. Box 1907 · Grand Junction, CO 81502

Collaboratively Monitoring the Expansion of the Tamarisk Leaf Beetle (*Diorhabda* spp.) 2007-2012

The yearly tamarisk leaf beetle distribution map is a result of monitoring partners from seven states and a multitude of funding sources. Tamarisk Coalition would like to recognize all of the individuals, agencies, organizations and foundations that make this monitoring possible.

If you are interested in becoming a monitoring partner or in funding these efforts, please contact Season Martin (smartin@tamariskcoalition.org).



Funding Sources (2007-2012)

Bureau of Indian Affairs
Bureau of Land Management
The Canadian River Municipal Water Authority
Colorado Department of Agriculture
Colorado River Municipal Water District, Texas
Colorado Water Conservation Board
Dinosaur National Monument
Grand Canyon Association
Grand Canyon National Park
Kenny Brothers Foundation
National Park Centennial Challenge
National Park Service
Oklahoma Cooperative Extension Service
Ouray National Wildlife Refuge
Sustainable Agriculture and Research and Education Program
Texas Parks and Wildlife Department
Texas State Soil and Water Conservation Board
US Fish and Wildlife Service
US Geological Survey
Telluride Foundation
The Walton Family Foundation
Williams

Partner Acknowledgements

Bent's Old Fort National Historic Site: Fran Pannebaker, Adam Heberlie
Bureau of Indian Affairs: Renee Benally, Roxanne Harrison, Patricia Wright
Bureau of Land Management: Sarah Scott, Jacob Young, Royal Gorge Field Office, Interdisciplinary Team
Canyon de Chelly National Monument: Mick Castillo
The Canadian River Municipal Water Authority: Kent Satterwhite & Rod Goodwin
Colorado Department of Agriculture, Palisade Insectary: Dan Bean, Sonya Ortega, Nina Louden
Colorado State Forest Service
Dinosaur National Monument: Peter Williams
Glen Canyon National Recreation Area: Lonnie Pilkington, John Spence, Minh Le, Oscar Gonzalez, Jordan Pina, Bill Raitter, Mclean Worsham & Frankie Coburn
Grand Canyon National Park: Lori Makarick
Grand Canyon Youth: Emma Wharton
Kaibab Paiute Tribe: Sarah Burger
Lake Mead National Recreation Area: Curt Deuser
Natural Resources Conservation Service: Patty Knupp
New Mexico State University: Dave Thompson
Northern Arizona University: Matt Johnson
Oklahoma State University: Tom Royer & Alissa Berro
Ouray National Wildlife Refuge: Diane Penttila
Southern Nevada Water Authority: Jason Eckberg
Sul Ross State University: Chris Ritzi
Texas A&M University: Allen Knutson, Jerry Michels, James Tracy, Erin Jones, Mark Muegge
Texas Parks and Wildlife Department: Chip Ruthven & Matthew Poole
University of Arizona: Levi Jamison
University of California Santa Barbara: Tom Dudley
US Army Corps of Engineers, Albuquerque District
US Bureau of Reclamation: Debra Eberts (retired)
US Fish & Wildlife Service Partners for Fish and Wildlife Program: Katy Fitzgerald