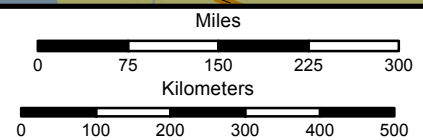
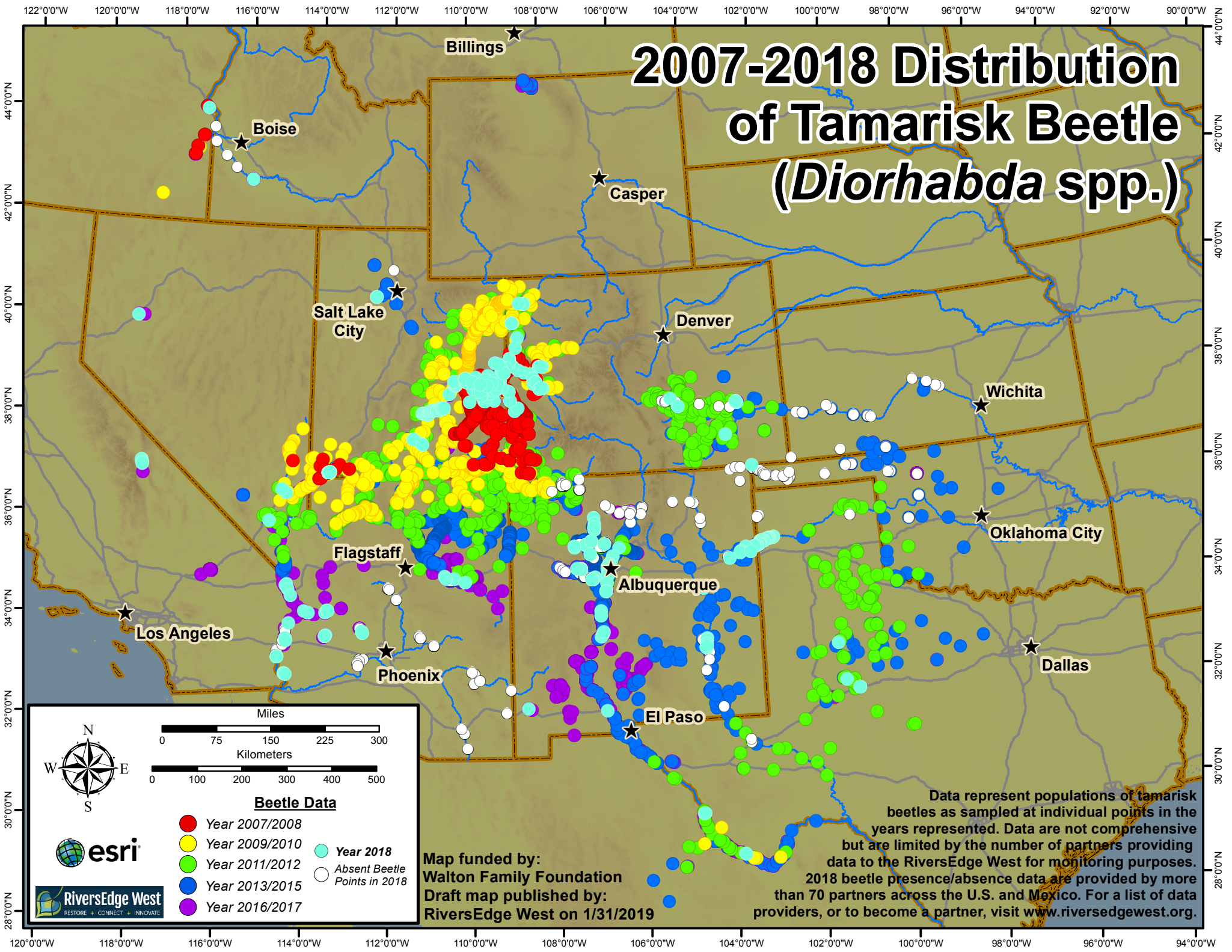


# 2007-2018 Distribution of Tamarisk Beetle (*Diorhabda* spp.)



### Beetle Data

- Year 2007/2008
- Year 2009/2010
- Year 2018
- Year 2011/2012
- Year 2013/2015
- Year 2016/2017
- Absent Beetle Points in 2018

Map funded by:  
Walton Family Foundation  
Draft map published by:  
RiversEdge West on 1/31/2019

Data represent populations of tamarisk beetles as sampled at individual points in the years represented. Data are not comprehensive but are limited by the number of partners providing data to the RiversEdge West for monitoring purposes. 2018 beetle presence/absence data are provided by more than 70 partners across the U.S. and Mexico. For a list of data providers, or to become a partner, visit [www.riversedgewest.org](http://www.riversedgewest.org).